

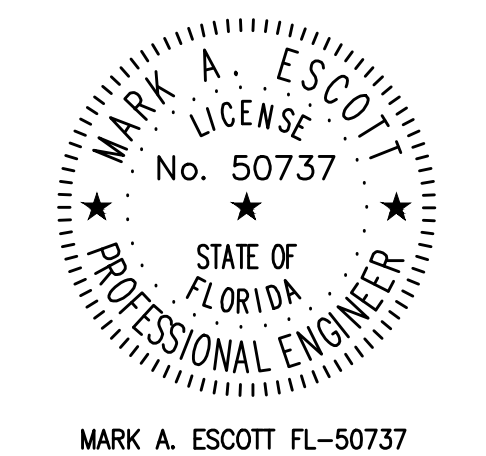


VCS Project NO. 2347911

SCHOOL BOARD MEMBERS

CHAIRMAN
VICE CHAIRMAN
DISTRICT 3
DISTRICT 4
DISTRICT 5

SUPERINTENDENT



ENGINEERS & CONSULTANTS

- ELECTRICAL
SGM ENGINEERING
935 LAKE BALDWIN LANE
ORLANDO, FL 32814
407-767-5188
MARK ESCOTT
MARK@SGMENGINEERING.COM
WWW.SGMENGINEERING.COM



To the best of my knowledge, these drawings and the project manual are complete and comply with the 2020 Florida Building Code 7th edition.

A.	SURVEY PARCEL ID	XXX
B.	LEGAL DESCRIPTION	XXX
C.	OCCUPANCY TYPE	EDUCATIONAL
D.	CONSTRUCTION TYPE	XXX
E.	RISK CATEGORY	XXX
F.	AUTOMATIC SPRINKLER	XXX
G.	BUILDING AREA	XXX
H.	BUILDING HEIGHT	XXX
I.	OCCUPANT LOAD	XXX

NOT TO SCALE

G001 COVER SHEET

ELECTRICAL

E001	ELECTRICAL SYMBOLS & SPECIFICATIONS
ED101	ELECTRICAL DEMO SITE PLAN
E101	ELECTRICAL SITE PLAN
ED301	ELECTRICAL DEMO POWER PLAN
E301	ELECTRICAL POWER PLAN
ED501	ELECTRICAL DEMO ONE LINE DIAGRAMS
E501	ELECTRICAL ONE LINE DIAGRAMS
E801	ELECTRICAL DETAILS

ALL WORK COMPLETED UNDER THE SCOPE OF THIS PROJECT SHALL, AS A MINIMUM, COMPLY WITH THE LAWS, RULES, STANDARDS AND DECISIONS WITH THE LATEST AMENDMENTS OF THE GOVERNMENTAL UNITS HAVING STATUTORY JURISDICTION OVER THIS PROJECT:

- a. FLORIDA BUILDING CODES 7TH EDITION (2020)
- b. NATIONAL ELECTRIC CODE, NFPA 70 (2017)
- c. NATIONAL FIRE-ALARM CODE, NFPA 72 (2016)
- d. FLORIDA FIRE PREVENTION CODE 7TH EDITION (2020)
- e. STATE REQUIREMENTS FOR EDUCATIONAL FACILITIES (SREF) - 2014 ED.
- f. FEDERAL OCCUPATIONAL SAFETY AND HEALTH ACT (OSHA)

[illegible]

DELAND HIGH SCHOOL
REPLACE SITE GENERATOR
VCS Project NO. 2347911
800 NORTH HILL AVE.
DELAND, FL 32724

ENGINEER MARK A. ESCOTT		ARCHIVIST/OF RECORD
DESIGNED BY JWN	DRAWN BY JWN	
ISSUE DATE 01/18/2023	AE PROJECT NUMBER 2022-506	
SHEET TITLE COVER SHEET		
DRAWING NO. G001		

100% CONSTRUCTION DOCUMENTS 01/20/2023

SGM
ENGINEERING

CA-00006208
935 LAKE BALDWIN LANE
ORLANDO, FL 32814
TEL: 407-767-5188
FAX: 407-767-5772
WWW.SGMENGINEERING.COM
COPYRIGHT © 2021, SGM ENGINEERING, INC.
SGM #2022-506



MARK ESCOTT FL- 50737

REVISIONS

DOCUMENT HISTORY
DESCRIPTION

NO. DATE

DELAND HIGH SCHOOL
REPLACE SITE GENERATOR
VCS Project NO. 2347911
800 NORTH HILL AVE.
DELAND, FL 32724

ARCHITECT OF RECORD

ENGINEER
MARK A. ESCOTT

DESIGNED BY

JWN

DRAWN BY

JWN

ISSUE DATE

01/18/2023

AE PROJECT NUMBER

2022-506

SHEET TITLE

ELECTRICAL SYMBOLS &
SPECIFICATIONS

DRAWING NO.

E001

LIGHTING FIXTURES

	1'x4' FIXTURE
	2'x2' FIXTURE
	2'x4' FIXTURE
	4' WALL MOUNT FIXTURE
	4' WALL MOUNT FIXTURE, EMERGENCY
	1'x4' FIXTURE, BATTERY/EMERGENCY
	2'x2' FIXTURE, BATTERY/EMERGENCY
	2'x4' FIXTURE, BATTERY/EMERGENCY
	4' STRIP FIXTURE
	4' STRIP FIXTURE, BATTERY/EMERGENCY
	4' STRIP FIXTURE, WALL MOUNTED
	4' STRIP FIXTURE, WALL MOUNTED, BATTERY/EMERGENCY
	TRACK FIXTURE
	CEILING MOUNTED RECESSED, DOWN LIGHT
	CEILING MOUNTED RECESSED, EMERGENCY DOWN LIGHT
	CEILING MOUNTED RECESSED, WALL WASHER (ARROW INDICATES DIRECTION OF WASH)
	SURFACE MOUNTED LIGHTING FIXTURE
	WALL MOUNTED SCONCE FIXTURE, BATTERY/EMERGENCY
	FLOOD LIGHT FIXTURE
	EMERGENCY LIGHT FIXTURE
	SINGLE FACE EXIT LIGHT FIXTURE (ARROW INDICATES DIRECTION OF EGRESS)
	DOUBLE FACE EXIT LIGHT FIXTURE (ARROW INDICATES DIRECTION OF EGRESS)
	POLE MOUNTED SITE LIGHTING FIXTURE (RECTANGLES INDICATE NUMBER OF FIXTURES)
	SINGLE POLE MOUNT LUMINAIRE (RECTANGLES INDICATE NUMBER OF FIXTURES)
	POLE MOUNTED LUMINAIRE
	BOLLARD OR PENDANT LIGHT FIXTURE
	BOLLARD OR PENDANT LUMINAIRE, EMERGENCY

SWITCHES

	SWITCH
	SWITCH, 2 POLE
	SWITCH, 3-WAY
	SWITCH, 4-WAY
	SWITCH - LINE VOLTAGE TIMER, 120/277 VAC, WATTSTOPPER TS-400 OR EQUAL.
	SWITCH - PILOT LIGHT
	SWITCH, 1 POLE, LETTER INDICATES SWITCHLEG CONTROLLED.
	SWITCH, 3-WAY, LETTER INDICATES SWITCHLEG CONTROLLED
	SWITCH, KEYSWITCH, 3-WAY
	SWITCH, KEYSWITCH
	MOTOR RATED SWITCH
	SWITCH, EXPLOSION PROOF
	SWITCH, LOW VOLTAGE MOMENTARY
	SWITCH, WEATHERPROOF

LIGHTING CONTROL DEVICES

	PHOTOCELL
	TIMECLOCK
	LIGHTING CONTACTOR
	*PIR-WALL MOUNT SENSOR, LOW TEMP, 24 VDC/AC, 20mA, WATTSTOPPER CB-100 OR EQUAL.
	*PIR-CEILING MOUNT SENSOR 24 VDC/VAC, 11mA, WATTSTOPPER CI-205 OR EQUAL.
	*DUAL ULTRASONIC/PIR-CEILING MOUNT SENSOR, 24 VDC/VAC, 35mA, WATTSTOPPER DT-305 OR EQUAL.
	*DUAL ULTRASONIC/PIR-WALL MOUNT SENSOR, 24 VAC/VDC, 35mA, WATTSTOPPER DT-205 OR EQUAL.
	*ULTRASONIC-CEILING CORRIDOR MOTION SENSOR, 24 VDC/VAC, 40mA, WATTSTOPPER WT-2250 OR EQUAL.
	PIR-WALL SWITCH DECORATOR MOTION SENSOR, 120/277 VAC, 800/1200W, WATTSTOPPER PW-100 OR EQUAL.
	DUAL ULTRASONIC/PIR-WALL SWITCH DECORATOR MOTION SENSOR, 120/277VAC, 800/1200W, WATTSTOPPER DW-100 OR EQUAL.
	DUAL ULTRASONIC/PIR-DUAL RELAY WALL SWITCH DECORATOR MOTION SENSOR, 120/277VAC, 800/1200W, WATTSTOPPER DW-200 OR EQUAL.
	UL 924 LISTED FAIL-SAFE EMERGENCY SWITCHING RELAY, LVS EPC-A OR EQUAL. LOWER CASE LETTER NEXT TO DEVICE INDICATES SWITCHLEG CONTROLLED.
	POWER PACK 120/277 VAC, 20 AMPS, 225mA SECONDARY, WATTSTOPPER BZ-250 OR EQUAL.

*FOR LOW VOLTAGE OCCUPANCY SENSORS, PROVIDE POWER PACK(S) 120/277 VAC, 20 AMPS, 225mA SECONDARY AS NEEDED FOR ZONE/AREA CONTROL. WATTSTOPPER BZ-250 OR EQUAL.

POWER DISTRIBUTION

	120/208V PANELBOARD, RECESSED
	120/208V PANELBOARD, SURFACE MOUNT
	277/480V PANELBOARD, SURFACE MOUNT
	277/480V PANELBOARD, RECESSED
	FEEDER OR BRANCH CIRCUIT CONCEALED IN WALL, CEILING OR FLOOR
	HOMERUN CONSISTING OF ONE SINGLE-PHASE, 1-POLE CIRCUIT. SEE SPECIFICATIONS AND/OR FEEDER SCHEDULES FOR WIRE SIZES. PANELBOARD AND CIRCUIT DESIGNATION ARE INDICATED.
	HOMERUN CONSISTING OF ONE SINGLE-PHASE, 2-POLE CIRCUIT. SEE SPECIFICATIONS AND/OR FEEDER SCHEDULES FOR WIRE SIZES. PANELBOARD AND CIRCUIT DESIGNATIONS ARE INDICATED.
	HOMERUN CONSISTING OF TWO SINGLE-PHASE CIRCUITS. SEE SPECIFICATIONS AND/OR FEEDER SCHEDULES FOR WIRE SIZES. PANELBOARD AND CIRCUIT DESIGNATIONS ARE INDICATED.
	HOMERUN CONSISTING OF THREE SINGLE-PHASE CIRCUITS. SEE SPECIFICATIONS AND/OR FEEDER SCHEDULES FOR WIRE SIZES. PANELBOARD AND CIRCUIT DESIGNATIONS ARE INDICATED.
	HOMERUN CONSISTING OF ONE THREE-PHASE CIRCUITS. SEE SPECIFICATIONS AND/OR FEEDER SCHEDULES FOR WIRE SIZES. PANELBOARD AND CIRCUIT DESIGNATIONS ARE INDICATED.

POWER DEVICES

	SINGLE RECEPTACLE
	DUPLEX RECEPTACLE
	DOUBLE DUPLEX RECEPTACLE
	ABOVE COUNTER DUPLEX RECEPTACLE
	DUPLEX RECEPTACLE, HALF SWITCHED
	SPECIAL PURPOSE RECEPTACLE
	SINGLE 250V NON-LOCKING TYPE RECEPTACLE
	DUPLEX RECEPTACLE FOR COMPUTER WORKSTATION
	QUAD RECEPTACLE FOR COMPUTER WORKSTATION
	DUPLEX RECEPTACLE FOR TV LOCATED AT 84" AFF UNLESS NOTED OTHERWISE.
	DUPLEX RECEPTACLE FOR TV LOCATED AT 18" AFF. LOCATE IN COMMON BOX WITH CCTV
	CEILING MOUNTED RECEPTACLE
	RECESSED FLOOR RECEPTACLE
	DUPLEX RECEPTACLE, GROUND FAULT
	DUPLEX RECEPTACLE, GROUND FAULT, ABOVE COUNTER
	QUAD RECEPTACLE, GROUND FAULT
	DUPLEX RECEPTACLE, GROUND FAULT WITH CAST ALUMINUM PADLOCKABLE (1/2" HASP) WEATHERPROOF "IN USE" COVER. TAYMAC MX3200 OR EQUAL.
	QUAD RECEPTACLE, GROUND FAULT WITH CAST ALUMINUM PADLOCKABLE (1/2" HASP) WEATHERPROOF "IN USE" COVER. TAYMAC MX 6200 OR EQUAL.
	DUPLEX RECEPTACLE, GROUND FAULT LOCATE WITHIN ELECTRIC WATER COOLER PER MANUFACTURER'S INSTRUCTIONS
	CLOCK
	POWER/DATA POLE
	POWER POLE
	DISCONNECT SWITCH
	MOTOR STARTER
	STARTER/DISCONNECT SWITCH
	VARIABLE FREQUENCY DRIVE
	JUNCTION BOX
	FLOOR MOUNTED JUNCTION BOX
	PULL BOX
	EQUIPMENT CONNECTION
	DOOR BELL PUSH BUTTON
	TRANSFORMER
	DOOR BELL
	SHUNT TRIP. MTD. AT 6"-5" AFF/AFG TO TOP OF ENCLOSURE

	MOTOR
	GENERATOR
	LOCKBOX
	GROUND BUS BAR
	GROUND ROD WITH TEST INSPECTION WELL. SEE SPECIFICATIONS.
	SURGE PROTECTION DEVICE, SEE SPECIFICATIONS.

LIGHTNING PROTECTION

	AIR TERMINAL (ALUMINUM CLASS 1 MIN).
	ROOFTOP MAIN CONDUCTOR, RUN EXPOSED ACROSS ROOF.
	DOWN CONDUCTOR, RUN CONCEALED IN STRUCTURE - COPPER CLASS 1
	COPPER-CLAD DRIVEN GROUND ROD AND TEST WELL. SEE SPECIFICATIONS.
	BOLTED 3-WAY SPLICE
	BOLTED 4-WAY SPLICE

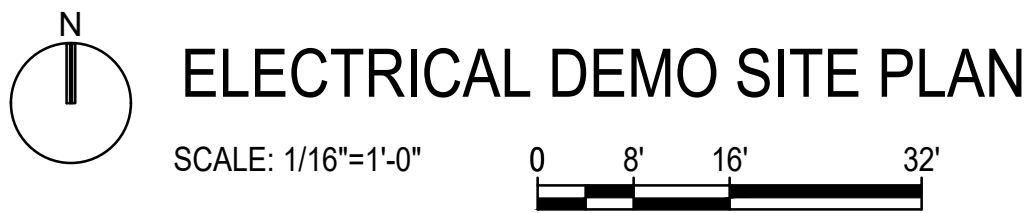
MISCELLANEOUS SYMBOL LEGEND

	DETAIL NUMBER
	TITLE
	DETAIL TITLE REFERENCE
	SHEET NUMBER WHERE DETAIL IS REFERENCED
	ADDITIONAL SHEET REFERENCES
	DETAIL NUMBER
	SHEET NUMBER TO WHERE DETAIL IS REFERENCED

ABBREVIATIONS

A	AMPERES	EXIST	EXISTING	MCB	MAIN CIRCUIT BREAKER
AE	AUDIO ENHANCEMENT	EXP	EXPLOSION PROOF	MCC	MOTOR CONTROL CENTER
AF	ABOVE FINISHED CEILING	FA	FIRE ALARM	MCP	MOTOR CIRCUIT PROTECTOR
AF	ABOVE FINISHED FLOOR	FLA	FULL LOAD AMPERES	MFR	MANUFACTURER
AFG	ABOVE FINISHED GRADE	FLUOR	FLUORESCENT	MH	METAL HALIDE
AIC	AMPERES INTERRUPTING CAPACITY	GFCI	GROUND FAULT CIRCUIT INTERRUPTER	MIN	MINIMUM
AL	ALUMINUM	GFP	GROUND FAULT PROTECTION	MISC	MISCELLANEOUS
AWG	AMERICAN WIRE GAUGE	GND	GROUND	MMS	MANUAL MOTOR STARTER SWITCH
BFC	BELOW FINISHED CEILING	HGT	HEIGHT	MTR	MOTOR
BFG	BELOW FINISHED GRADE	HID	HIGH INTENSITY DISCHARGE	MTD	MOUNTED
C	CONDUIT	HPS	HIGH PRESSURE SODIUM	MTG	MOUNTING
CAB	CABINET	HOA	HAND-OFF-AUTOMATIC	NAC	NOTIFICATION APPLIANCE CIRCUIT
CKT	CIRCUIT	HP	HORSEPOWER	NEC	NATIONAL ELECTRICAL CODE
CLG	CEILING	HVAC	HEATING/VENTILATING/	NL	NIGHT LIGHT, UNSWITCHED
CL	CENTERLINE	AIR	CONDITIONING	PNL	PANEL
CT's	CURRENT TRANSFORMERS	HV	HIGH VOLTAGE	PSI	PULL STATION INSIDE
CU	COPPER	INC	INCANDESCENT	PVC	POLYVINYL CHLORIDE
DISC	DISCONNECT(ING)	JB	JUNCTION BOX	REC	RECEPTACLE
DWG	DRAWING(S)	KV	KILO-VOLTS	RGS	RIGID GALVANIZED STEEL
EA	EACH	KVA	KILO-VOLTS-AMPERES	SPD	SURGE PROTECTION DEVICE
ECB	ENCLOSED CIRCUIT BREAKER	KVAR	KILO-VOLTS-AMPERES REACTIVE	TEL	TELEPHONE
EMT	EXHAUST FAN	KWH	KILO-WATTS	TYP	TYPICAL
EMT	ELECTRICAL METALLIC TUBING	V	VOLTS	UON	UNLESS OTHERWISE NOTED
EQUIP	EQUIPMENT	LTG	KILO-WATT-HOURS	VA	VOLT-AMPERES
EUH	ELECTRIC UNIT HEATER	m	METER	VFD	VARIABLE FREQUENCY DRIVE
EWC	ELECTRIC WATER COOLER	mm	MILLIMETER	W	WATTS
EWI	ELECTRIC WATER HEATER	MAX	MAXIMUM	WP	WEATHER PROOF
EXH	EXHAUST			XFMR	TRANSFORMER

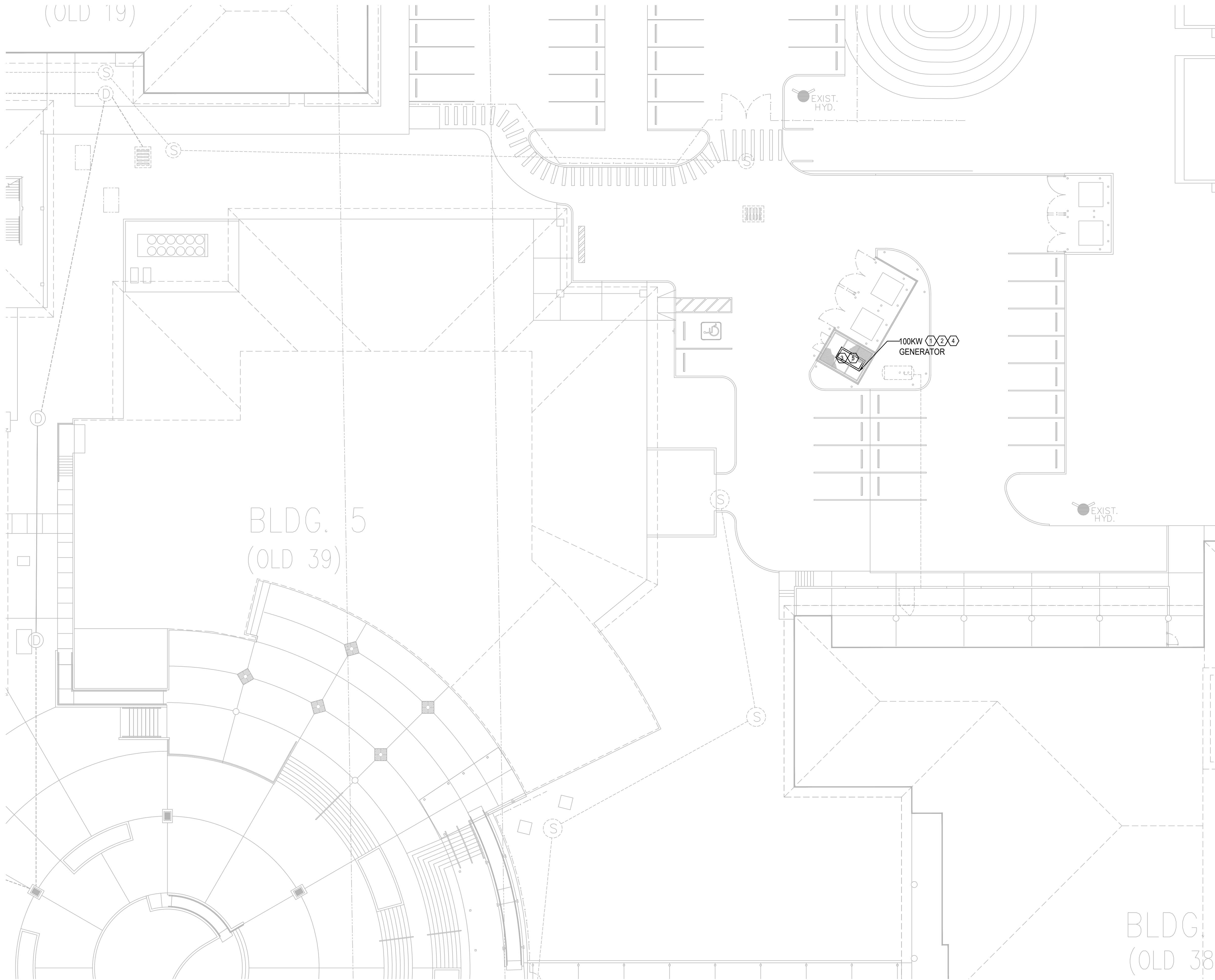
ELECTRICAL SYMBOLS & SPECIFICATIONS



1. DEMOLISH EXISTING GENERATOR, SHROUD, CONCRETE PAD, WIRE AND ALL EXPOSED CONDUIT.
2. REMOVE EXISTING WIRE MESH FENCE TO ALLOW FOR THE REMOVAL OF THE EXISTING GENERATOR AND INSTALLATION OF NEW GENERATOR.
3. REMOVE EXISTING GENERATOR BATTERY CHARGER, BLOCK HEATER, CONDUIT AND WIRING. UNDERGROUND AND IN BUILDING CONDUIT SHALL BE SAVED FOR THE RENOVATION PHASE.

DELAND HIGH SCHOOL
REPLACE SITE GENERATOR
VCS Project NO. 2347911
800 NORTH HILL AVE.
DELAND, FL 32724

DRAWING NO. **ED101**



GENERAL NOTES:

- REFER TO SYMBOL LEGEND ON SHEET E001.
- REFER TO BOOK SPECIFICATIONS.
- REFER TO EQUIPMENT SCHEDULES ON DRAWINGS 601 FOR DISCONNECT, CONDUIT AND WIRE SIZES.
- ALL FEEDERS ARE TO HAVE LESS THAN 2% TOTAL VOLTAGE DROP AND ALL BRANCH CIRCUITS SHALL HAVE LESS THAN 3% VOLTAGE DROP.
- IF CIRCUITS ARE COMBINED AND RUN AS MULTI-WIRE BRANCH CIRCUITS SHARING A COMMON NEUTRAL, THEN EACH UNGROUNDED CONDUCTOR MUST BE DISCONNECTED SIMULTANEOUSLY BY A COMMON TRIP CIRCUIT BREAKER. CONTRACTOR MAY, AT THEIR OPTION, PROVIDE EITHER COMMON TRIP MULTI-POLE CIRCUIT BREAKERS OR UTILIZE MANUFACTURERS LISTED HANDLE TIES IN ORDER TO PROVIDE THE SIMULTANEOUS TRIP. THESE DEVICES ARE NOT SHOWN IN THE PANEL SCHEDULES AND MUST BE PROVIDED BY THIS SCOPE OF WORK. NO MORE THAN 3 CIRCUITS MAY BE COMBINED IN A SINGLE RACEWAY WITHOUT PRIOR APPROVAL BY THE ENGINEER.
- CONTRACTOR IS RESPONSIBLE FOR CUTTING AND PATCHING SIDEWALKS OR DIRECTIONAL BORING UNDER ALL SIDEWALKS AND ROADS. UTILIZE 3000 PSI CONCRETE FOR ANY PATCHING OF ROADWAY (BLACK CONCRETE) OR SIDEWALK. FINISH LOOK OF THE CONCRETE SHALL MATCH THE EXISTING LOOK OF THE SURROUNDING CONCRETE OR ASPHALT. CONTRACTOR SHALL COMPACT ALL TRENCHES NOT UNDER CONCRETE TO 95% AND UNDER CONCRETE TO 98% COMPACTION. MAINTAIN THE FLOW OF TRAFFIC DOWN THE STREET AT ALL TIMES. PROVIDE A WRITTEN MAINTENANCE OF TRAFFIC PLAN PRIOR TO BEGINNING ANY WORK THAT WILL DISRUPT THE NORMAL FLOW OF TRAFFIC. PROVIDE ALL SIGNAGE, FLAGMEN, ETC. REQUIRED TO MAINTAIN THE TRAFFIC FLOW. PLANT NEW GRASS WHERE WORK WAS DISTURBED. ALL AREAS SHALL BE BROUGHT TO AN 'AS FOUND' CONDITION.
- CONTRACTOR TO CHECK PHASE ROTATION PRIOR TO DISCONNECTION AND AFTER RECONNECTION OF POWER.

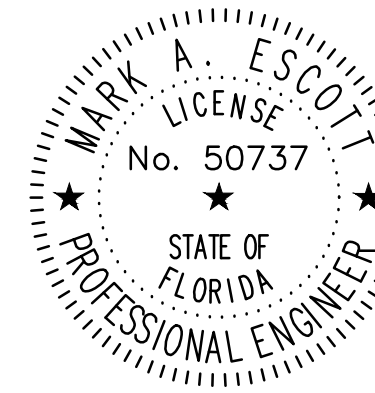
PLAN KEY NOTES: ④

- PROVIDE AND INSTALL NEW GENERATOR. CONTRACTOR TO EXTEND/MODIFY EXISTING CONDUITS TO NEW GENERATOR CONNECTION POINT AND INSTALL NEW FEEDER WIRING PER EQUIPMENT FEEDER SCHEDULE ON SHEET E501. EXTEND/MODIFY EXISTING CONDUIT FOR NEW GENERATOR START CIRCUIT FROM THE ATS AND PROVIDE NEW WIRING IN ACCORDANCE WITH MANUFACTURERS REQUIREMENTS.
- REPLACE EXISTING WIRE MESH FENCE ROOF THAT WAS REMOVED DURING THE DEMOLITION PHASE. ADJUST MOUNTING HEIGHT OF FENCE TO BE HIGHER IF REQUIRED FOR NEW GENERATOR SIZE. FOR BASIS OF DESIGN KOHLER, THE FENCE WILL NEED TO MOVE TO BE ON TOP OF THE WALL.
- CONNECT NEW GENERATOR BATTERY CHARGER, BLOCK HEATER AND ANNUNCIATOR CIRCUITS TO THE NEW GENERATOR CONNECTION POINTS. CONTRACTOR TO EXTEND/MODIFY EXISTING CONDUIT. PROVIDE NEW WIRE AS FOR ALL NEW EQUIPMENT.
- BASIS OF DESIGN COOLING EXHAUST IS PROVIDED OUT THE TOP OF THE GENERATOR. FOR BASIS OF DESIGN, THE HOLE LEFT IN THE WALL WHERE SHROUD WAS LOCATED WILL NEED TO BE BLOCKED IN TO MATCH EXISTING AND NEW SHROUD WILL NOT BE REQUIRED FOR COOLING EXHAUST. PAINT ENCLOSURE AT REPAIR TO MATCH THE EXISTING.
- PROVIDE NEW CONCRETE HOUSE KEEPING PAD IN ACCORDANCE WITH MANUFACTURERS INSTRUCTIONS AND DETAIL ON E801. COORDINATE THE LOCATIONS OF ALL CONDUIT STUB UPS THROUGH THE PAD PRIOR TO POURING.

ELECTRICAL SITE PLAN
SCALE: 1/16"=1'-0"
0 8' 16' 32'

SGM
ENGINEERING

CA-0006208
935 LAKE BALDWIN LANE
ORLANDO, FL 32814
TEL: 407-767-5188
FAX: 407-767-5772
WWW.SGMENGINEERING.COM
COPYRIGHT © 2021, SGM ENGINEERING, INC.
SGM #2022-506



MARK ESCOTT FL- 50737

REVISIONS

DOCUMENT HISTORY
DESCRIPTION

NO. DATE

DELAND HIGH SCHOOL
REPLACE SITE GENERATOR
VCS Project NO. 2347911
800 NORTH HILL AVE.
DELAND, FL 32724

ENGINEER
MARK A. ESCOTT

ARCHITECT OF RECORD

DESIGNED BY

JWN

DRAWN BY

JWN

ISSUE DATE

01/18/2023

AE PROJECT NUMBER

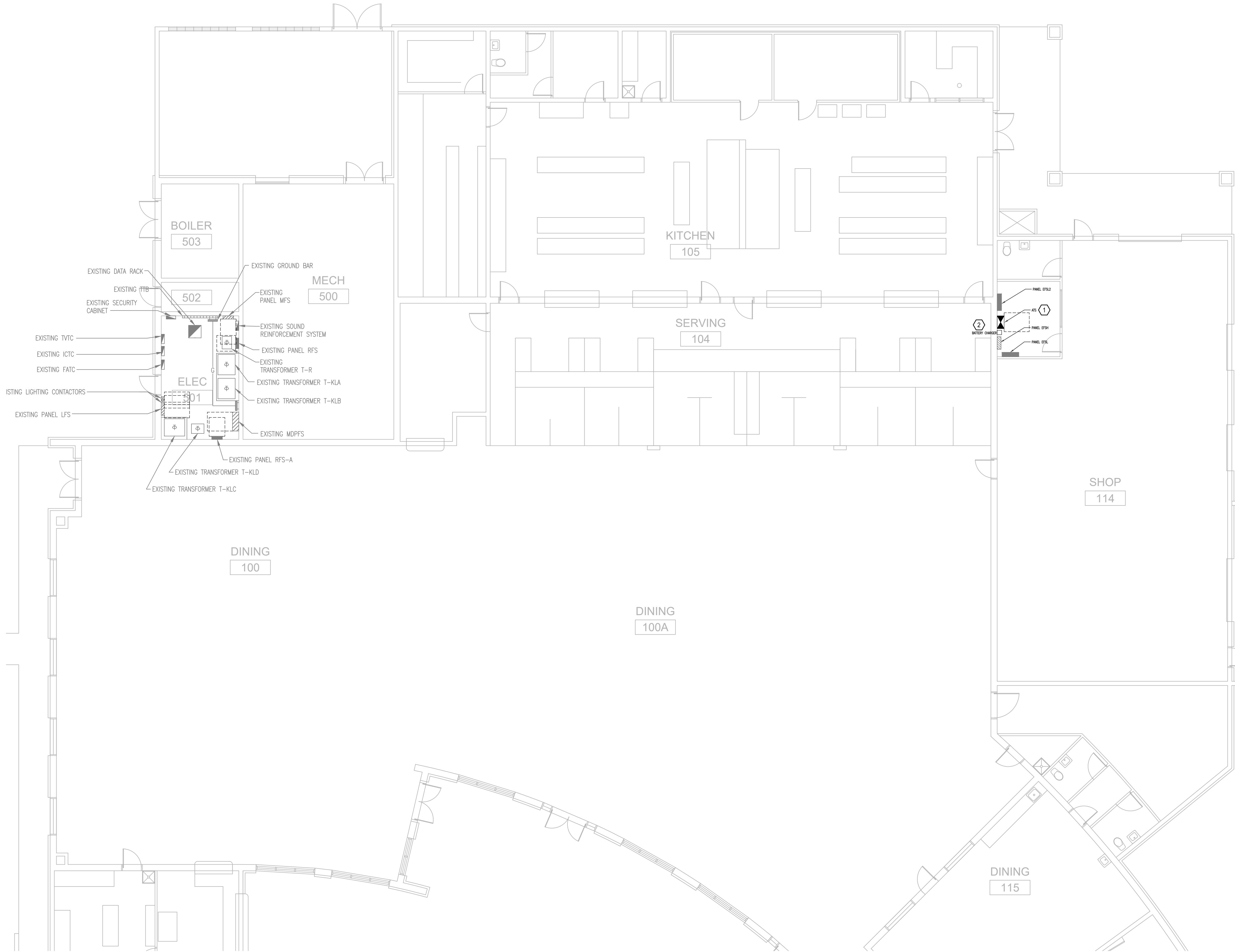
2022-506

SHEET TITLE

ELECTRICAL SITE PLAN

DRAWING NO.

E101

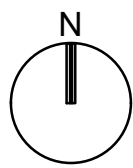


GENERAL NOTES:

- REFER TO SYMBOL LEGEND ON SHEET E001.
- REFER TO BOOK SPECIFICATIONS.
- REFER TO EQUIPMENT SCHEDULES ON DRAWINGS 601 FOR DISCONNECT, CONDUIT AND WIRE SIZES.
- EXACT LOCATIONS OF UNDERGROUND UTILITIES ARE TO BE VERIFIED PRIOR TO BEGINNING WORK.
- UNLESS OTHERWISE NOTED, WHERE EXISTING CONDUITS AND CONDUCTORS ARE NOTED TO BE REMOVED, THEY ARE TO BE REMOVED IN THEIR ENTIRETY BACK TO THE POINT OF ORIGIN.
- ALL DEMOLISHED EQUIPMENT AND FIXTURES NOTED TO BE SALVAGED, SHALL BE DELIVERED TO THE OWNER. TRANSPORT ITEMS TO OWNERS DESIGNATED STORAGE AREA WITHIN 25 MILES OF THE SITE. SHOULD THE OWNER DECIDE NOT TO RECEIVE THESE ITEMS, THE CONTRACTOR WILL REMOVE FROM THE SITE AND DISPOSE IN A LEGAL MANNER TO AN EPA APPROVED LANDFILL. COMPLY WITH ALL NATIONAL, STATE AND LOCAL REQUIREMENTS WITH REGARD TO HAZARDOUS MATERIALS REMOVAL, HANDLING AND DISPOSAL.
- REMOVE ALL CONDUIT AND WIRE, FROM REMOVED ITEMS, BACK TO THE SOURCE UNLESS IT IS TO BE RE-USED FOR NEW WORK.
- VISIT THE EXISTING FACILITY AND CAREFULLY EXAMINE THOSE PORTIONS OF THE BUILDING AND SITE AFFECTED BY THIS WORK BEFORE SUBMITTING PROPOSALS, SO AS TO BECOME FAMILIAR WITH THE EXISTING CONDITIONS AND DIFFICULTIES THAT WILL AFFECT THE EXECUTION OF THE WORK. SUBMISSION OF A PROPOSAL WILL BE CONSTRUED AS EVIDENCE THAT SUCH EXAMINATION HAS BEEN MADE AND LATER CLAIMS FOR DIFFICULTIES ENCOUNTERED WILL NOT BE RECOGNIZED.
- COORDINATE WITH THE OWNER AND OWNERS REPRESENTATIVE ANY POWER OUTAGES THAT MAY AFFECT THE OWNER IN ANY MANNER. 72 HOUR PRIOR NOTICE SHOULD BE GIVEN TO THE OWNER FOR ALL COORDINATED OUTAGES.
- NOTIFY THE OWNER SEVEN (7) DAYS PRIOR TO THE START OF ANY DEMOLITION WORK. NOTIFICATION SHALL INCLUDE A GENERAL LIST OF SERVICES AFFECTED AND A SCHEDULE OF WORK TO BE PERFORMED.

PLAN KEY NOTES: Ⓢ

- DEMOLISH EXISTING ATS, WIRING AND ALL EXPOSED CONDUIT TO/FROM ATS REQUIRED FOR THE INSTALLATION OF THE NEW ATS.
- DEMOLISH EXISTING BATTERY CHARGER. CONTRACTOR TO PROTECT EXISTING CONDUIT TO BE REUSED DURING THE RENOVATION PHASE.



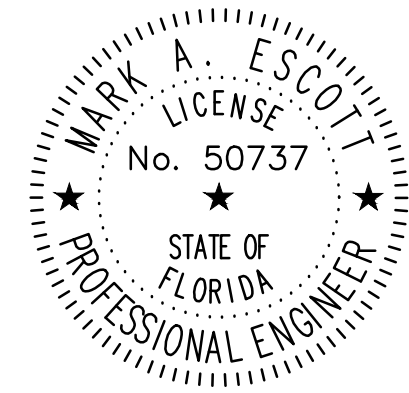
ELECTRICAL DEMO POWER PLAN

SCALE: 1/8"=1'-0"



SGM
ENGINEERING

CA-0006208
935 LAKE BALDWIN LANE
ORLANDO, FL 32814
TEL: 407-767-5188
FAX: 407-767-5772
WWW.SGMENGINEERING.COM
COPYRIGHT © 2021, SGM ENGINEERING, INC.
SGM #2022-506



MARK ESCOTT FL- 50737

REVISIONS

DOCUMENT HISTORY

DESCRIPTION

NO. DATE

DELAND HIGH SCHOOL
REPLACE SITE GENERATOR
VCS Project NO. 2347911
800 NORTH HILL AVE.
DELAND, FL 32724

ENGINEER
MARK A. ESCOTT

ARCHITECT OF RECORD

DESIGNED BY
JWN

DRAWN BY
JWN

ISSUE DATE
01/18/2023

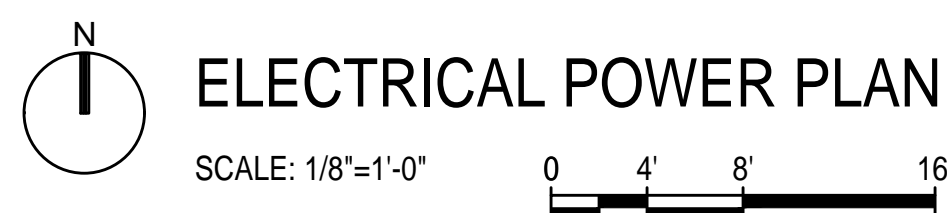
AE PROJECT NUMBER
2022-506

SHEET TITLE

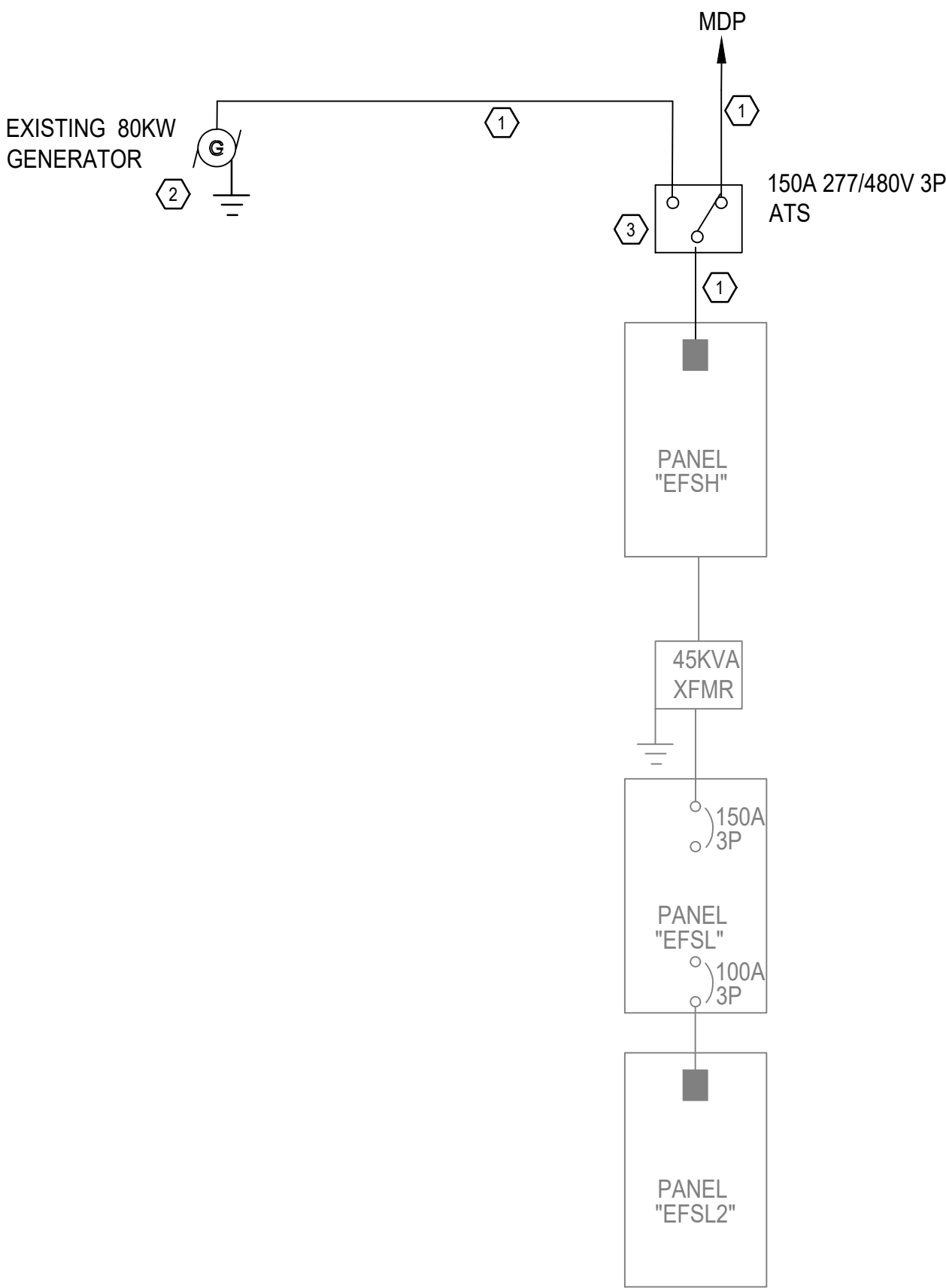
ELECTRICAL DEMO POWER PLAN

DRAWING NO.

ED301



E301



GENERAL NOTES:

- a. REFER TO SYMBOL LEGEND AND GENERAL NOTES ON SHEET E-001.
- b. REFER TO BOOK SPECIFICATIONS.
- c. ITEMS SHOWN DARK ARE NEW TO BE PROVIDED. ITEMS SHOWN SCREENED ARE EXISTING TO REMAIN.
- d. CONTRACTOR TO COORDINATE ALL SHUTDOWNS WITH OWNER. MINIMUM 72 HOUR NOTICE.

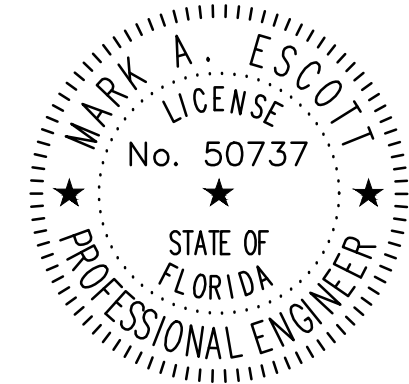
PLAN KEY NOTES:

- 1. DEMOLISH EXISTING EXPOSED CONDUIT AND WIRING.
- 2. DEMOLISH EXISTING GENERATOR.
- 3. DEMOLISH EXISTING ATS.

ELECTRICAL DEMO ONE LINE DIAGRAMS

SGM
ENGINEERING

CA-00006208
935 LAKE BALDWIN LANE
ORLANDO, FL 32814
TEL: 407-767-5188
FAX: 407-767-5772
WWW.SGMENGINEERING.COM
COPYRIGHT © 2021, SGM ENGINEERING, INC.
SGM #2022-506



MARK ESCOTT FL- 50737

REVISIONS

DOCUMENT HISTORY
NO. | DATE | DESCRIPTION

DELAND HIGH SCHOOL
REPLACE SITE GENERATOR
VCS Project NO. 2347911
800 NORTH HILL AVE.
DELAND, FL 32724

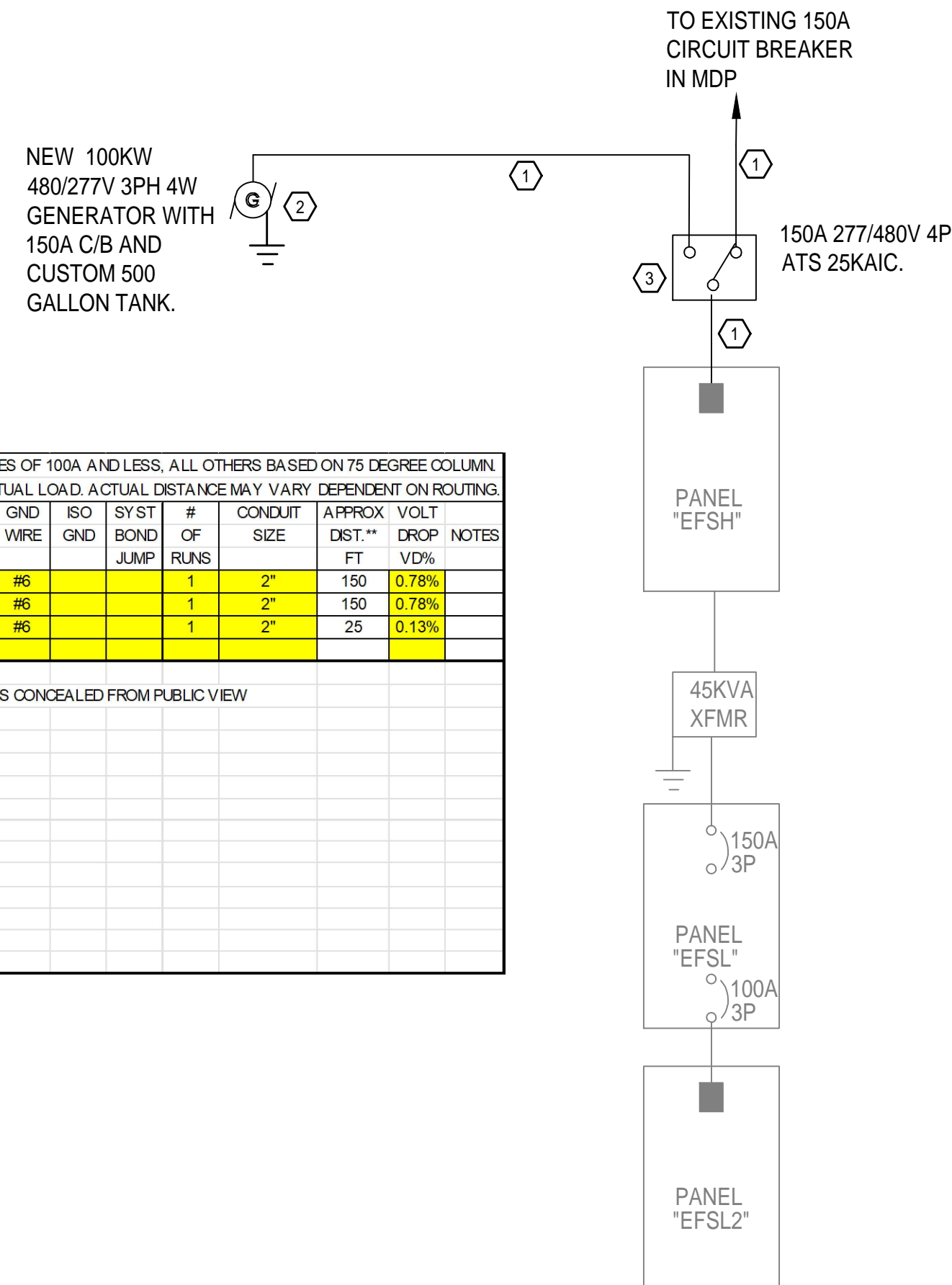
ENGINEER MARK A. ESCOTT	
DESIGNED BY JWN	DRAWN BY JWN
ISSUE DATE 01/18/2023	AE PROJECT NUMBER 2022-506
SHEET TITLE ELECTRICAL DEMO ONE LINE DIAGRAMS	

DRAWING NO.

ED501

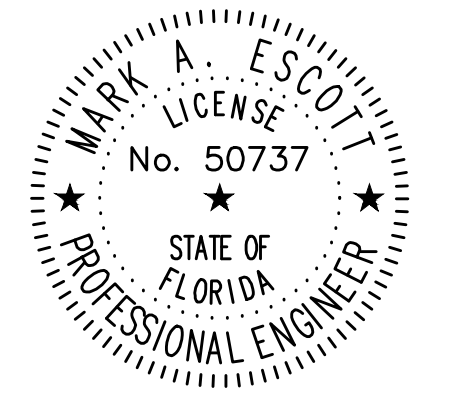
- A. REFER TO SYMBOL LEGEND AND GENERAL NOTES ON SHEET E-001.
- B. REFER TO BOOK SPECIFICATIONS.
- C. ITEMS SHOWN DARK ARE NEW TO BE PROVIDED. ITEMS SHOWN SCREENED ARE EXISTING TO REMAIN.
- D. CONTRACTOR TO COORDINATE ALL SHUTDOWNS WITH OWNER MINIMUM 72 HOUR NOTICE.

1. EXTEND EXISTING CONDUIT AS REQUIRED. CONTRACTOR TO INSTALL NEW WIRING AS SHOWN ON THE FEEDER SCHEDULE ON THIS SHEET.
2. PROVIDE AND INSTALL NEW GENERATOR. PROVIDE NEW #4 CU GROUND ELECTRODE CONDUCTOR FROM GENERATOR IN SPARE CONDUIT INTO THE BUILDING AND CONNECT TO THE EXISTING GROUNDING ELECTRODE FOR THE BUILDING. BOND NEUTRAL TO GROUND INSIDE THE GENERATOR.
3. PROVIDE AND INSTALL NEW ATS.



PANEL FEEDER SCHEDULE:

SGM
ENGINEERING
CA-00006208
935 LAKE BALDWIN LANE
ORLANDO, FL 32814
TEL: 407-767-5188
FAX: 407-767-5772
WWW.SGMAENGINEERING.COM
PYRHYG © 2021 SGM ENGINEERING, INC.
SGM #2022-506



MARK ESCOTT FL- 50737

[illegible]

DELAND HIGH SCHOOL
REPLACE SITE GENERATOR
VCS Project NO. 2347911
800 NORTH HILL AVE.
DELAND, FL 32724

ARCH/ENGR OF RECORD

ENGINEER
MARK A. ESCOTT

DESIGNED BY
JWN

DRAWN BY
JWN

ISSUE DATE
01/18/2023

AE PROJECT NUMBER
2022-506

SHEET TITLE

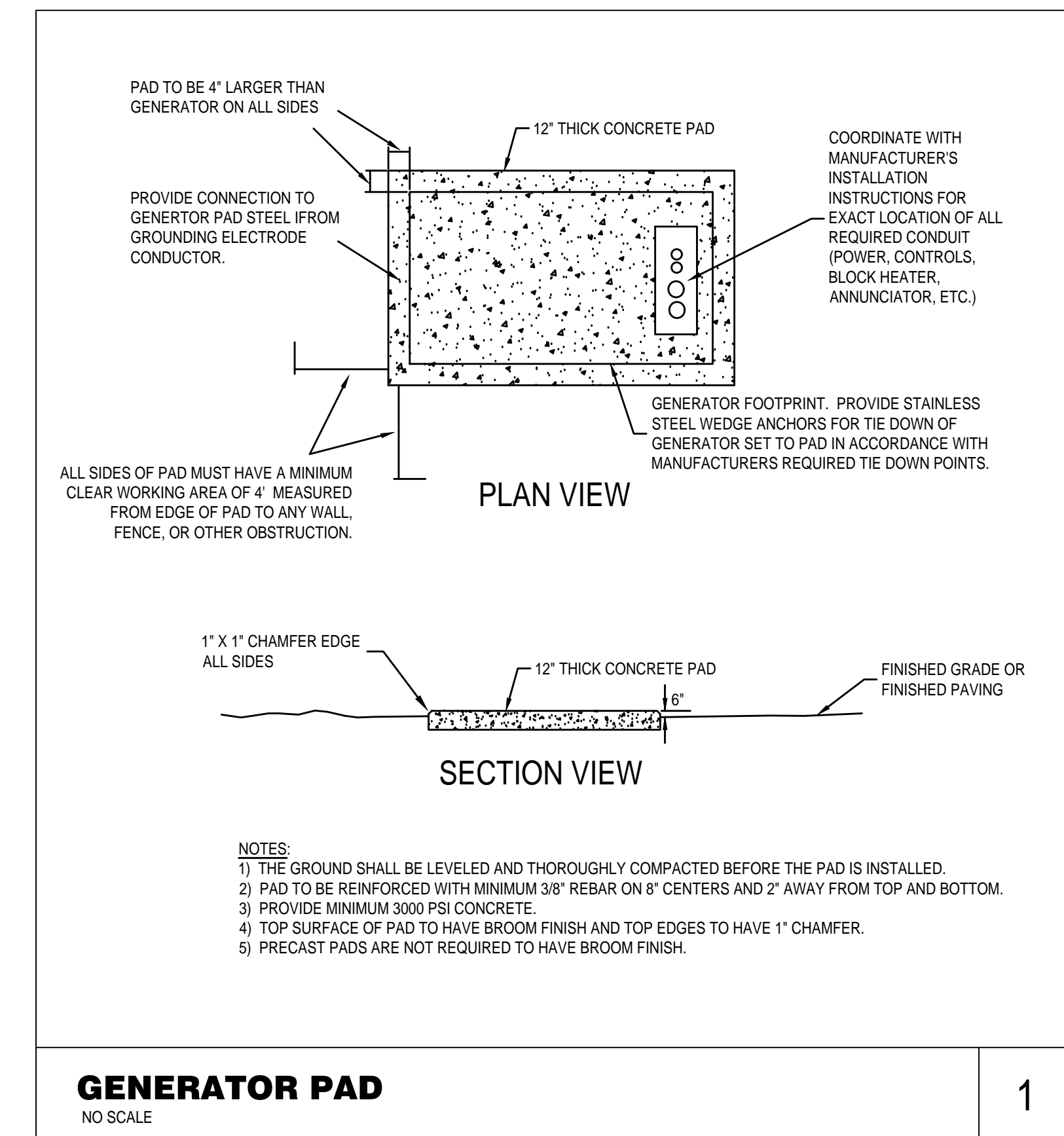
ELECTRICAL ONE LINE DIAGRAMS

DRAWING NO.

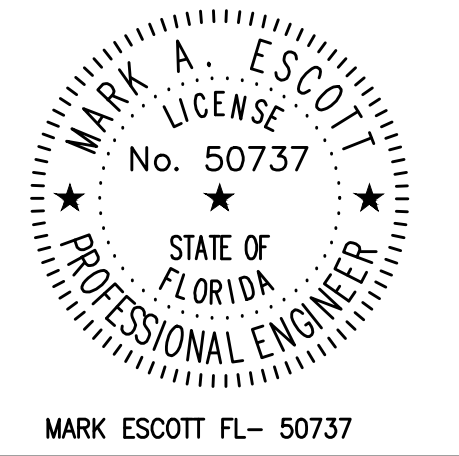
E501

ELECTRICAL ONE LINE DIAGRAMS

ELECTRICAL DETAILS



SGM
ENGINEERING
CA-00006208
935 LAKE BALDWIN LANE
ORLANDO, FL 32814
TEL: 407-767-5188
FAX: 407-767-5772
WWW.SGMAENGINEERING.COM
PYRHYG © 2021 SGM ENGINEERING, INC.
SGM #2022-506

[illegible]

DELAND HIGH SCHOOL
REPLACE SITE GENERATOR
VCS Project NO. 2347911
800 NORTH HILL AVE.
DELAND, FL 32724

ENGINEER MARK A. ESCOTT	
DESIGNED BY JWN	DRAWN BY JWN
ISSUE DATE 01/17/2023	AE PROJECT NUMBER 2022-506
SHEET TITLE ELECTRICAL DETAILS	
DRAWING NO. E801	