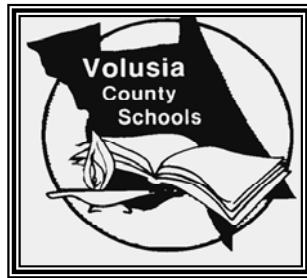


School District of Volusia County  
**Project Oversight Committee Report**

Fiscal Year Ending June 30, 2012



*School Board of Volusia County*

**Dr. Al Williams, Chairman**

**Ms. Judy Conte, Vice-Chairman**

**Mr. Stan Schmidt**

**Ms. Candace Lankford**

**Mrs. Diane Smith**

*Superintendent of Schools*

**Margaret A. Smith, D.Ed.**

*Through the individual commitment of all, our students will graduate with the knowledge,  
skills, and values necessary to be successful contributors to our democratic society.*

## **Table of Contents**

<b>Description</b>	<b>Page No.</b>
Committee Members	3
Meeting Schedule	4
Introduction	5
Significant Events and Observations in the Last Ten Years	6
Enrollment	6
Legislation	7
Acts of Nature	8
Economic Conditions	8
Projects	9
Portable Classrooms	13
Revenues and Debt Instruments	13
Expenditures	15
Implementation of Prior Year Recommendations and Comments	16
Recommendations	18
Conclusion	19
Report of Sales Tax Collections	22
Report of Sales Tax Sources and Uses	23
Classroom Portables – Actuals and Projected	24
Enrollment History and Projections	25
Capital Projects List as of June 30, 2012 – Project Oversight	26
Volusia County Elementary Schools – Sales Tax and Other	
Major Capital Projects 2002-2012	28
Volusia County Middle & High Schools – Sales Tax and Other	
Major Capital Projects 2002-2012	29
Sales Tax Projects Status Report – Assumptions & Explanations	30
Sales Tax Project Status Report	32
Sales Tax Projects Status Report – Changes in Scope	
Assumptions & Explanations	35
Sales Tax Projects Status Report – Changes in Scope	36

**The School Board of Volusia County, Florida**

**Project Oversight Committee Members – June 30, 2012**

Ms. Paula Gregory, CPA

Weston & Gregory, P.A., Daytona Beach, FL

Term ends: December 31, 2013

Mr. Jeffrey Malmberg, President

Jeff Malmberg Construction Co., Inc., DeLand, FL

Term ends: December 31, 2013

Mr. Leonard Marinaccio III, President

Bomar Construction, Inc., Ormond Beach, FL

Term ends: December 31, 2013

Mr. David Bridgeman, President/CEO

Pinnacle Bank, Orange City, FL

Term ends: December 31, 2014

Mr. Richard Haughwout, CPA

Joseph Master & Company, DeLand, FL

Term Ends: December 31, 2014

Reverend Ricarrdo M. Spencer Sr., Senior Pastor

Jesus People Covenant Ministries Church, Int'l

1801 South Nova Road

South Daytona, FL 32119

Term Ends: December 31, 2014

Dr. Robert Moll, Deputy Superintendent for Financial and Business Services

Volusia County School District, DeLand, FL

Term ends: At Will

**Ad Hoc Committee Members**

Ms. Saralee Morrissey, Director – Site Acquisition

Mr. Russ Tysinger, Director – Maintenance and Operations

## **Project Oversight Committee Meeting Schedule**

- May 4, 2012, Holly Hill School, 3:30 p.m.
- August 20, 2012, Facilities Services Building, 3:30 p.m.

## **INTRODUCTION**

In 2001, Volusia County voters approved a referendum adopting a half-cent sales tax (the Referendum) for fifteen years, ending December 31, 2016; to fund the School District of Volusia County's approved ten-year plan to construct certain identified educational facilities. The Referendum established the Project Oversight Committee (the Committee) to provide additional assurance to the citizens that the School Board meets its commitments and obligations related to improvements promised during the 2001 election. The Committee was created with the responsibility of providing a report of the sales tax construction projects listed within 90 days of the end of each fiscal year.

This eleventh annual report is being filed consistent with the requirements of the Referendum and covers the first eleven (11) fiscal years of activity ending June 30, 2012. This report includes the current status (as of June 30, 2012) of projects funded by sales tax including changes in scope as well as timeline fluctuations. While it also outlines progress made on prior year recommendations, this report makes a recommendation for the School Board's consideration as the District moves towards conclusion of the sales tax projects.

## **SIGNIFICANT EVENTS AND OBSERVATIONS**

### **Eleven Years in Review – Enrollment, Legislation, Acts of Nature, Economy, and the Projects**

In January 2002, the public began paying an additional half-cent sales tax to support a pre-approved ten-year construction plan for identified educational facilities. Many public schools in Volusia County were overcrowded and experiencing annual increases in student enrollments. Permanent capacity in the schools fell far short of student enrollments. New facilities could offer improved instructional capabilities and there was a concern with providing consistency and equity in facility offerings (air conditioning, technology, etc.) between the district's older schools and its newer schools. The projected trends indicated that the additional sales tax funds would provide a means to accomplish these goals.

#### **Enrollment**

On day 20 (the same benchmark will be used for all comparisons of enrollment) of the 2000-01 school year, there were 61,259 students in Volusia County Schools inclusive of students enrolled in charter schools, special centers and virtual settings. Of those students, 60,257 were in facilities owned by the school board. There were only 53,694 permanent student stations. Additional needs were met through the use of portable classrooms. During the subsequent six years, while the district proceeded with construction of new schools and renovations of existing schools, student enrollment increased by an additional 3,300 students.

During the 2007-08 school year, the district experienced a loss of students for the first time. The 2007-08 school year enrollment was 1,071 less students than the previous school year. Since that time, enrollment has continued to drop. The 2011-12 school year actual enrollment revealed 61,636 students with 67,864 permanent student stations. In order to adapt to the changing enrollment trends, the impact of the "Great Recession" on the Volusia economy and

sales tax collections, and the implications associated with charter schools, home schooling and virtual educational opportunities, the Committee recommended revisions to the project list. The Board approved the revisions in March 2009.

### **Legislation**

During the past eleven years, the impact of both federal and state legislation has affected the district in many ways:

- In November 2002, Florida's voters approved a state constitutional amendment setting limits for the maximum number of students (K-3: 18 students, 4-8: 22 students, and 9-12: 25 students) in a core class by room. The transition was measured at the district level by grouping through the 2005-06 school year, then at the school level through the 2009-10 school year. Since the 2010-11 school year, compliance has been measured at the classroom level.
- State funding for education has greatly affected the operational and capital budgets for the school system. In the last six years the state funding (Florida Education Finance Program otherwise known as FEFP) for Volusia has reduced the District's operating budget by more than \$80.1 million. In FY 2009, through state mandate, an effort to compensate for the decreased operational dollars caused a loss of 0.25 mills from the capital budget to be transferred to the operating budget. In FY 2010, the State increased the transfer to 0.50 mills. This reflects an approximate decrease of \$60 million in capital revenues since FY 2009. In addition, the State Legislature has eliminated Public Education Capital Outlay (PECO) for the Volusia County School District, and other school districts, for the 2011-12 and 2012-13 school year. This resulted in a loss of \$4.6 million.

- There were three additional charter schools that opened in fiscal year 2011-12 - Ivy Hawn School of the Arts, Burns Science & Technology Charter School, and Reading Star Academy of Excellence.

### **Acts of Nature**

Construction costs and bidding on projects became increasingly significant as the real estate boom in Florida sent property values soaring. Then in late summer of 2004, Hurricane Charley made landfall in southwest Florida and passed through Volusia County. Just a few weeks later, Hurricanes Frances, Ivan and Jeanne left their paths of damage. Building supply costs rose significantly as a result of the hurricane damage throughout the state. Elementary school bids went from a cost of \$97.91/square foot in 2003 to a cost of \$176.69/square foot in 2005 – an increase of 53%. The increased cost of labor and materials as well as the availability of contractors necessitated a review of the projects for balancing capacity needs with the need for renovation or replacing older facilities.

### **Economic Conditions**

In 2011, Florida's economic growth remained in positive territory for the second year after declining two years in a row. State Gross Domestic Product (GDP) ranked Florida 37th in the nation in real growth with a gain of 0.5%. While the state's ranking improved, the growth slowed from a downwardly revised 0.9% for 2010.

The employment rate in May of 2012 was 8.6% (794,000 people) in Florida and 8.2% in the U.S. Eight states had a higher unemployment rate than Florida, which is tied with two states: Illinois and Mississippi.<sup>1</sup>

---

<sup>1</sup> As reported by the Office of Economic and Demographic Research, July 13, 2012 presentation.



The Volusia County certified tax roll showed a value of \$17.5 billion in 2002, \$24.6 billion in 2005, \$41.3 billion in 2008 and then down to \$26.9 billion for fiscal year 2012. Annual countywide residential building permits were 3,248 in 2001, and peaked at 5,415 in 2005. In 2011, the total number of residential permits had dropped to 472<sup>2</sup>. A large inventory of unsold residential properties and properties in foreclosure continue to plague the Volusia economy.

During the first three years of the Sales Tax Program, sales tax collections exceeded projections, construction costs were predictable and student enrollment continued to increase steadily. Since 2007, sales tax collections have declined and in 2010 for the first time, the actual collections were less than original estimates. The deteriorating economic climate continues to linger and the condition is unprecedented in Volusia County and Florida.

### **The Projects**

The original project list was based on the 2001 sales tax referendum. Each year the Committee reviewed the project list taking into account the changes in financial resources and balancing the changing needs with a focus on keeping the promise made to the community. The original list was amended by the Board pursuant to the Committee's recommendation in March of 2009. Student populations continued to change and both the district staff and the committee re-evaluated several projects for replacements and additions. When the Committee's annual report was presented to the Board in September 2010, the committee once again recommended that the board amend the project list. Pursuant to that recommendation, the second amended project list was presented to the board and was subsequently approved by them on April 26, 2011.

---

<sup>2</sup> Source: Volusia County Division of Economic Development Report Update, May 4, 2012

The School Board's amended project list beginning on page 26 demonstrates its commitment to the need for balancing facility renovations with building new space to accommodate the years of growth. The completed projects communicate the value derived from the School Board's commitment to its current design philosophy of building and maintaining high quality schools that are intended to serve future generations. The School Board has invested other capital funds in order to ensure completion of projects, as well as the continuance of the board's construction quality standards.

**Projects completed (unless noted) to date by community are as follows:**

☒ Daytona Beach:

Campbell Middle School – replacement on site

Champion Elementary School (Hurst Elem. Replacement) – replacement on new site

David C. Hinson, Sr. Middle School – new facility

Longstreet Elementary School – additions and renovations

Mainland High School – replacement on site

Ortona Elementary School – additions and renovations

Seabreeze High School – additions and renovations

Turie T. Small Elementary School – additions and renovations

☒ DeBary:

Highbanks Learning Center (Alternative Education) – new facility

☒ DeLand:

Blue Lake Elementary School – renovations and air conditioning

Citrus Grove Elementary School – new facility

DeLand High School – replacement on site

Southwestern Middle School – renovations

☒ Deltona:

Deltona High School - heating, ventilation and air conditioning

Pride Elementary School – new facility

Spirit Elementary School – new facility

☒ Edgewater:

Edgewater Public – site work

☒ Holly Hill:

Holly Hill School – 2-story classroom addition, new gymnasium & music room, and additional parking incorporated on elementary school campus and converted elementary school to K-8 and closed middle school.

☒ Lake Helen:

Volusia Pines Elementary School - addition

☒ New Smyrna Beach:

Coronado Beach Elementary School – addition and renovation

New Smyrna Beach Middle School – site work and drainage

New Smyrna Beach High School – replacement on new site

Read-Pattillo Elementary School – renovation and site expansion

☒ Orange City:

Manatee Cove Elementary School – new facility

River Springs Middle School – new facility

University High School – new facility

☒ Ormond Beach:

Ormond Beach Middle School – replacement - is the only sales tax project that remains under construction. The project team includes the architectural firm, Starmer and Ranaldi Architects, and the construction firm, H. J. High Contractors, as the CM. Phase I and II construction are completed. Phase III buildings are occupied and final completion of all work is scheduled for November 2012.

☒ Pierson:

T.D. Taylor Middle/High School – replacement on site

☒ Port Orange:

Community Learning Center (Alternative Education) – new facility

Cypress Creek Elementary School – new facility

Spruce Creek High School – addition and site work

☒ South Daytona

South Daytona Elementary School - replacement and additions on site

☒ Playground Equipment

Installation of playground equipment at all elementary schools is complete.

☒ Pavilions

Daytona Beach – Palm Terrace and Turie T. Small Elementary Schools

DeLand – Blue Lake, Freedom and Starke Elementary Schools

Deltona – Spirit Elementary School

Edgewater – Edgewater Elementary School

Lake Helen – Volusia Pines Elementary School

Orange City – Manatee Cove Elementary and Orange City Elementary Schools

Ormond Beach – Ormond Beach Elementary and Pathways Elementary Schools

Port Orange – Cypress Creek Elementary School

### **Portable Classrooms**

At the outset of the sales tax funded program the district had 651 portable classrooms on school campuses. One of the announced goals of the sales tax program was the reduction in the number of portables. The passage of the Class Size Reduction (CSR) amendment created a continued challenge for classroom space for the district. During SY 2011-12, the district reported 534 portables were in use as classrooms. (See Classroom Portables Actual and Projected – Page 24). A survey of portables is conducted each year for the purpose of reporting on their utilization and condition. District staff's goal for SY 2012-13 was to reduce the number of portables to approximately 400 with no leased portables. At this time it appears that most leased portables, with the exception of 10 have been returned and that SY 2012-13 opened with 478 portables.

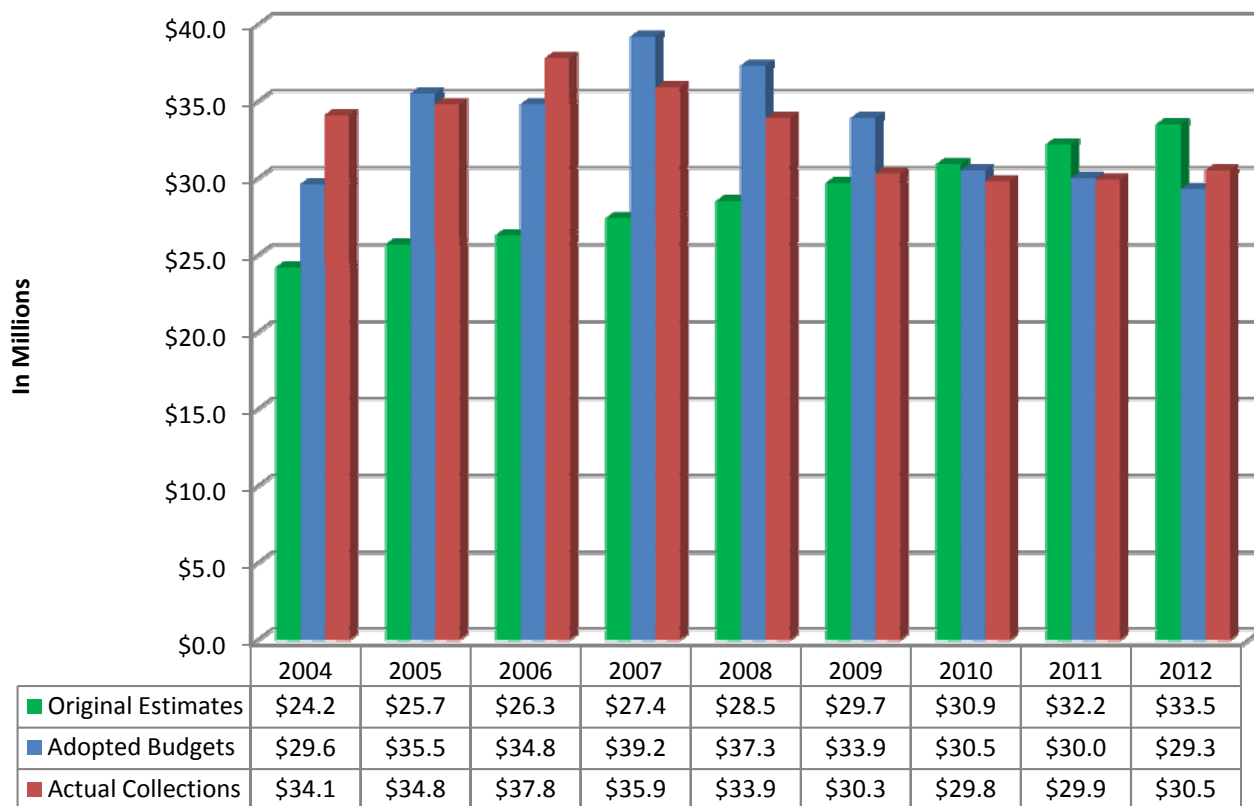
## **REVENUES AND DEBT INSTRUMENTS**

(See Report of Sales Tax Collections, page 22)

The District will continue to use the original projections from the sales tax referendum as a benchmark for performance. However, to provide accurate budget information, the District has adjusted the budgeted sales tax collections based on actual performance as shown by the “Adopted Budgets” column in the chart included in this section.

Actual collections were \$342,853,714 from January 1, 2002 through June 30, 2012 and exceeded original estimates, by approximately 17%. District collections for fiscal year 2012 were \$642,896 more than fiscal year 2011. Collection information is as follows:

## Sales Tax Revenues



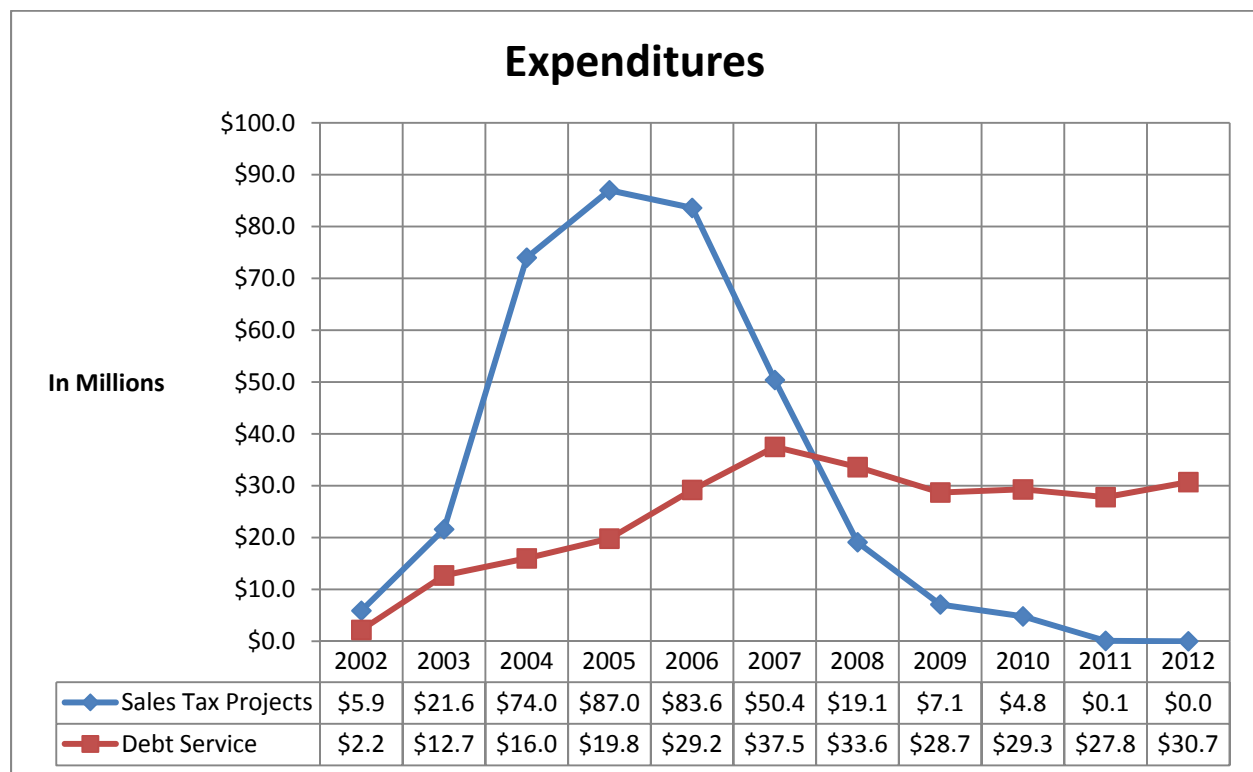
Fiscal year 2011-12: saw the sales tax collections return to the 2009 levels, an increase of \$600,000 over 2011 collections. In FY2008-09, the Legislature transferred 0.25 mills, approximately \$8 million, from the district's capital fund to the operating fund. In FY2009-10, the Legislature continued to mandate the 0.25 mill transfer and required an additional 0.25 mills to be transferred from the capital fund to the Florida Education Finance Program (FEFP), totaling 0.50 mills or approximately \$16 million. In addition to this mandated transfer, all the capital revenue sources have declined from \$159 million in 2007-08 to \$76 million in 2011-12. This has significantly and adversely impacted the five year work plan. The transfer combined with the revenue decline from all sources is the basis for projects to be delayed indefinitely and the dramatic changes to the five year work plan.

Now that the last of the sales tax projects are in their final stages, the only expenditures left will be for debt service on projects that were moved forward by issuing debt.

## **EXPENDITURES**

(See Report of Sales Tax Sources and Uses, page 23)

The District has paid \$80,696,828 in interest expense from inception of this endeavor through fiscal year June 30, 2012 on the Sales Tax Revenue Bonds, Series 2002, 2004 and 2006. In fiscal year 2012, the District expended a total of \$30,710,608 in debt service costs for the Sales Tax Revenue Bonds and \$16,672,242 for Certificates of Participation sales tax projects. In fiscal year 2013, the debt service expense will total \$27,530,457 for the Sales Tax Revenue Bonds and \$16,667,557 for the Certificates of Participation on sales tax projects.



The remaining list of projects approved for sales tax funding has again been reviewed by the committee taking into consideration the changing needs within Volusia County, the level of

funding required for those projects and amount of revenue currently being generated by the half cent sales tax to cover the debt service.

## **IMPLEMENTATION OF PRIOR YEAR RECOMMENDATIONS**

- 1. Continue to maintain a comprehensive legislative platform, including educational facilities needs with a stronger emphasis on state funding for education to include both school construction as well as general operating funds.** Public school funding continues to be a concern as additional capital funds are transferred to compensate for underfunded operational needs.
- 2. Continue to communicate to citizen groups and local governments both the impact of CSR, NCLB, state funding cuts and the progress of sales tax projects.** Budget presentations have been made to the public through board, community and school organization meetings. In addition, the presentations are posted on the district website and available to the public. Staff continues to be available to present the status of the building program.
- 3. Continue to monitor increasing costs and identify cost savings efforts that will prove effective without jeopardizing quality of functionality.** This will include the monitoring of changes in cost for each stage of projects, cost comparisons by contractors and types of contracts, as well as cost comparisons to other school districts, state and industry averages. The district should also continue to evaluate the projects in conjunction with the shifting demographics and available revenue sources. The district's construction standards already incorporate many of the "green" building standards that are now being popularized. Many of the standards add cost initially but yield operational



savings. The board should continue to utilize those green standards that yield operational savings and long term construction quality. Certification to a “green” standard should be considered; however, cost to provide certification should be evaluated before being required. The district has and will continue to include these as standards. The “green” certification was achieved at Holly Hill School.

4. **Review and evaluate the impact of CSR, NCLB, charter schools, home-schooling, and virtual school on enrollment and demographic shifts as they affect the building program and facility needs.** The increased number of charter applications and charter schools will continue to impact facility needs. Increases in virtual school and dual enrollment classes, computerized testing and digital learning technology will also affect building and program needs.

5. **Recommend the Volusia County School Board consider the process to request voter approval of additional millage in order to address both operating and capital needs.**

The cut in state funding combined with the decline in property tax, sales tax, impact fee revenue, and elimination of PECO funding affect both the operating and capital budgets.

New funding must be pursued in order to continue to maintain the district’s investments in programs as well as facilities.

## **RECOMMENDATIONS:**

1. Continue to maintain a comprehensive legislative platform, including educational facilities needs with a stronger emphasis on state funding for education to include both school construction as well as general operating funds.
2. Continue to communicate to citizen groups and local governments both the impact of CSR, NCLB, state funding cuts and the progress of sales tax projects.
3. Continue to monitor increasing costs and identify cost savings efforts that will prove effective without jeopardizing quality of functionality. This will include the monitoring of changes in cost for each stage of projects, cost comparisons by contractors and types of contracts, as well as cost comparisons to other school districts, state industry averages. The district should also continue to evaluate the projects in conjunction with the shifting demographics and available revenue sources. The district's construction standards already incorporate many of the "green" building standards that are now being popularized. Many of the standards add cost initially but yield operational savings. The board should continue to utilize those green standards that yield operational savings and long term construction quality. Certification to a "green" standard should be considered; however cost to provide certification should be evaluated before being required.
4. Review and evaluate the impact of CSR, NCLB, charter schools, home-schooling, and virtual school on enrollment and demographic shifts as they affect the building program and facility needs.
5. Recommend the Volusia County School Board continue to pursue and promote an additional millage increase that will ultimately lessen the subsistence of the current capital transfer, and thus provide the necessary funds for supporting the ½ cent projects through required maintenance.

## **CONCLUSION**

The Project Oversight Committee was established to provide additional assurance to the citizens of Volusia County that the School Board meets its commitments under the Sales Tax Initiative in 2001. The Referendum charges the Committee with the responsibility of reporting on the implementation, progress, status and completion of the sales tax construction projects listed. During fiscal year 2011-2012, the Project Oversight Committee held two public meetings.

The final phase at Ormond Beach Middle School will mark the successful completion of a most ambitious capital building program. The initial referendum adopting a half-cent sales tax for fifteen years was to fund the School District's ten year plan to construct and improve educational facilities. This building program, as indicated on the maps provided within this report, has resulted in all areas of the County benefitting from the proceeds of the half penny sales tax.

When this ten year plan was developed there was significant growth in the student population on the west side of the County requiring additional schools. At the same time, facilities on the east side of the County required updating or replacement. State funding was not sufficient to address the needs of growth, nor aging facilities. The sales tax referendum addressed these needs.

During the ten year period of construction, many factors changed which required revisions to the original plan. Population growth slowed which resulted in a decline in student enrollment. The economy on the local, state and national level deteriorated and continues to be unstable. These factors have had a negative effect on the finances of the School District. Modifications to the ten year plan were required. The decision to recommend changes to the projects was never taken lightly. Difficult choices had to be made, given the funds available and

changing conditions. Through this period, the Committee encouraged the School Board to keep the promises made to the citizens.

The Committee believes that several projects that were not able to be completed because of the decline in capital revenues may still be warranted if funds become available. The Volusia County School District remains a large school district with approximately 10,000,000 square feet of facilities that will continue to require capital investment and maintenance. The economic climate, along with actions of the State Legislature, has adversely impacted the capital revenues available to the School District. The undeniable success of the building initiative, the ongoing capital preservation and replacement requirements of the District's facilities along with the lack of adequate capital funding, indicates the need to continue a capital revenue source for school renovations, replacement and maintenance.

Based on all of the information, the Committee would like to confirm the following recommendation for the board to consider:

We reaffirm our recommendation and support to the School Board with regard to a voter referendum for an additional property tax millage, as was approved by Orange County voters last November. The cut in state funding combined with the decline in property tax, sales tax, and impact fee revenue and elimination of PECO funding affect both the operating and capital budgets. We believe new funding must be pursued in order to continue to maintain the district's investments in programs as well as facilities. The property tax millage is the only funding source which will allow the Board the flexibility to address its operating needs as well as capital needs. Our committee is now equally concerned about the continued maintenance of the Volusia County School District's educational programs as well as its facilities.

Population and enrollment growth may not be the driving force in Volusia County's economy as it was in the past but in order to maintain the quality of its educational programs and learning environments that have helped make Volusia County an excellent place to live, it is imperative the School Board pursue adequate funding to maintain its programs and facilities. State funding is not adequate to meet the continuing needs of our schools and students and we do not believe that there will be an increase in state funding in the near future to address our concerns.

We believe that a formal review of this issue must be initiated now. We further recommend that, using the process implemented for the current sales tax initiative as a guideline, the Board should consider establishing a formal committee, made up of multiple appointees by each Board member, to investigate, evaluate and recommend a campaign strategy. We, as Project Oversight Committee members, are willing to participate in such a committee.

The Board has kept the promise. We, as a community, must instill a sense of pride and accomplishment and continue to enhance student achievement through quality programs, and ensure that we can provide and maintain adequate facilities.

## ***SCHOOL DISTRICT OF VOLUSIA COUNTY***

### **Project Oversight Report**

#### **Sales Tax Collections**

**June 30, 2012**

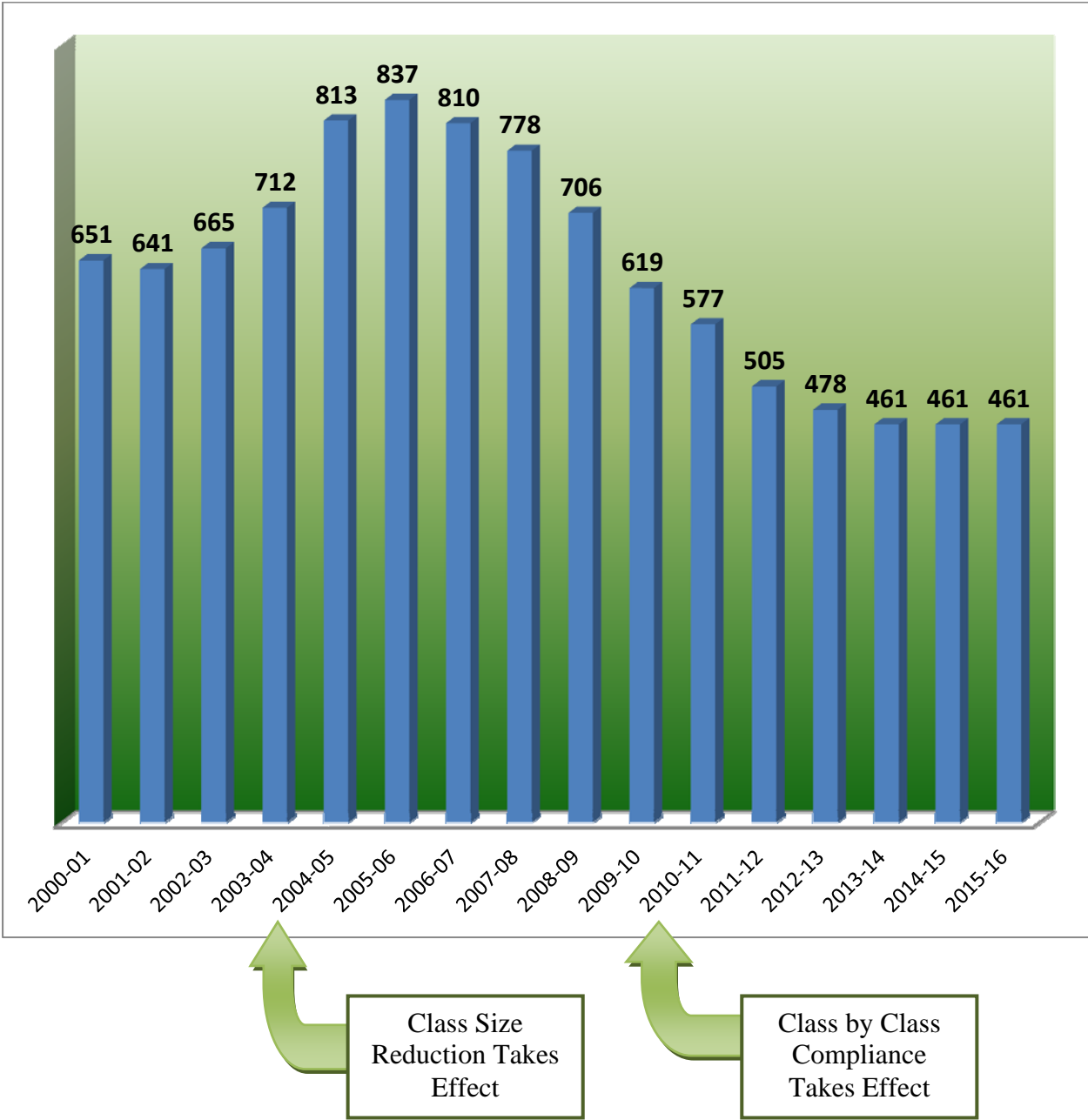
	<b>Current Fiscal Year</b>	<b>Prior Fiscal Year</b>	
	<b>(2012)</b>	<b>(2011)</b>	<b>Difference</b>
<b>July</b>	2,296,992	2,295,784	1,208
<b>August</b>	2,052,009	1,996,782	55,227
<b>September</b>	2,755,169	2,753,212	1,957
<b>October</b>	2,116,066	2,115,466	600
<b>November</b>	2,208,019	2,104,716	103,303
<b>December</b>	3,119,416	3,153,964	(34,548)
<b>January</b>	2,289,759	2,152,820	136,939
<b>February</b>	2,447,575	2,427,514	20,061
<b>March</b>	3,547,126	3,338,826	208,300
<b>April</b>	2,349,641	2,332,230	17,411
<b>May</b>	2,215,210	2,194,625	20,585
<b>June</b>	3,129,742	3,017,890	111,852
<b>Total</b>	<b>30,526,725</b>	<b>29,883,829</b>	<b>642,896</b>

## ***SCHOOL DISTRICT OF VOLUSIA COUNTY***

### **Project Oversight Report Sales Tax Sources and Uses June 30, 2012**

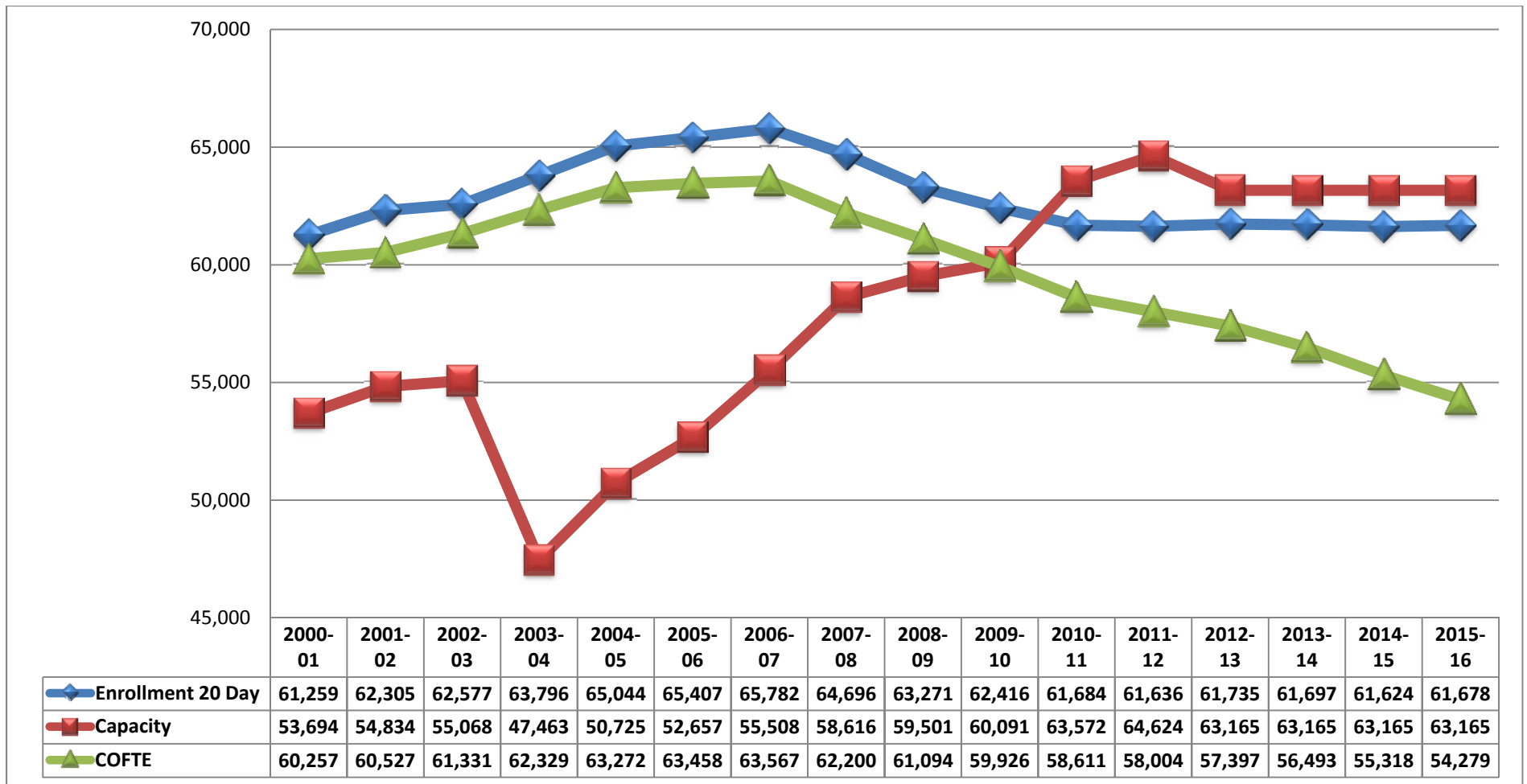
	<b>Current Fiscal Year (2012)</b>	<b>Prior Fiscal Year (2011)</b>	<b>Difference</b>
<i>Sources</i>			
Sales Tax Collections	\$ 30,526,725	\$ 29,883,829	\$ 642,896
Bond Proceeds	42,690,437	-	42,690,437
Unrestricted Interest	4,301	5,723	(1,422)
Restricted Interest	15,780	16,068	(288)
Other	-	-	-
<i>Total Sources</i>	<u>73,237,243</u>	<u>29,905,620</u>	<u>43,331,623</u>
<i>Less: Uses</i>			
Land Acquisition and Site Improvements	-	75,976	(75,976)
Design Services	-	-	-
Construction Services	-	707	(707)
Furniture, Fixtures and Equipment	-	-	-
Facilities Management	-	3,001	(3,001)
Debt Service	69,881,706	27,385,984	42,495,722
<i>Total Uses</i>	<u>69,881,706</u>	<u>27,465,668</u>	<u>42,416,038</u>
<i>Excess (Deficit) of Sources over Uses</i>	<u>\$ 3,355,537</u>	<u>\$ 2,439,952</u>	<u>\$ 915,585</u>

# Number of Classroom Portables – Actuals and Projections





## Enrollment History and Projections



**Enrollment** – The number of students physically enrolled within Volusia County Schools inclusive of students enrolled in charter schools, special centers and virtual settings.

**Capacity** – The permanent capacity of Volusia County Schools as determined by the Florida Inventory of School House (FISH).

**COFTE** – The Capital Outlay Full Time Equivalency does not include students in facilities not owned by the Volusia County School Board, i.e. charter schools, Florida Virtual and some special centers.

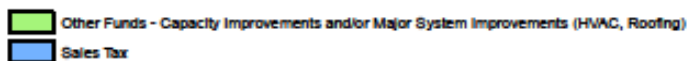
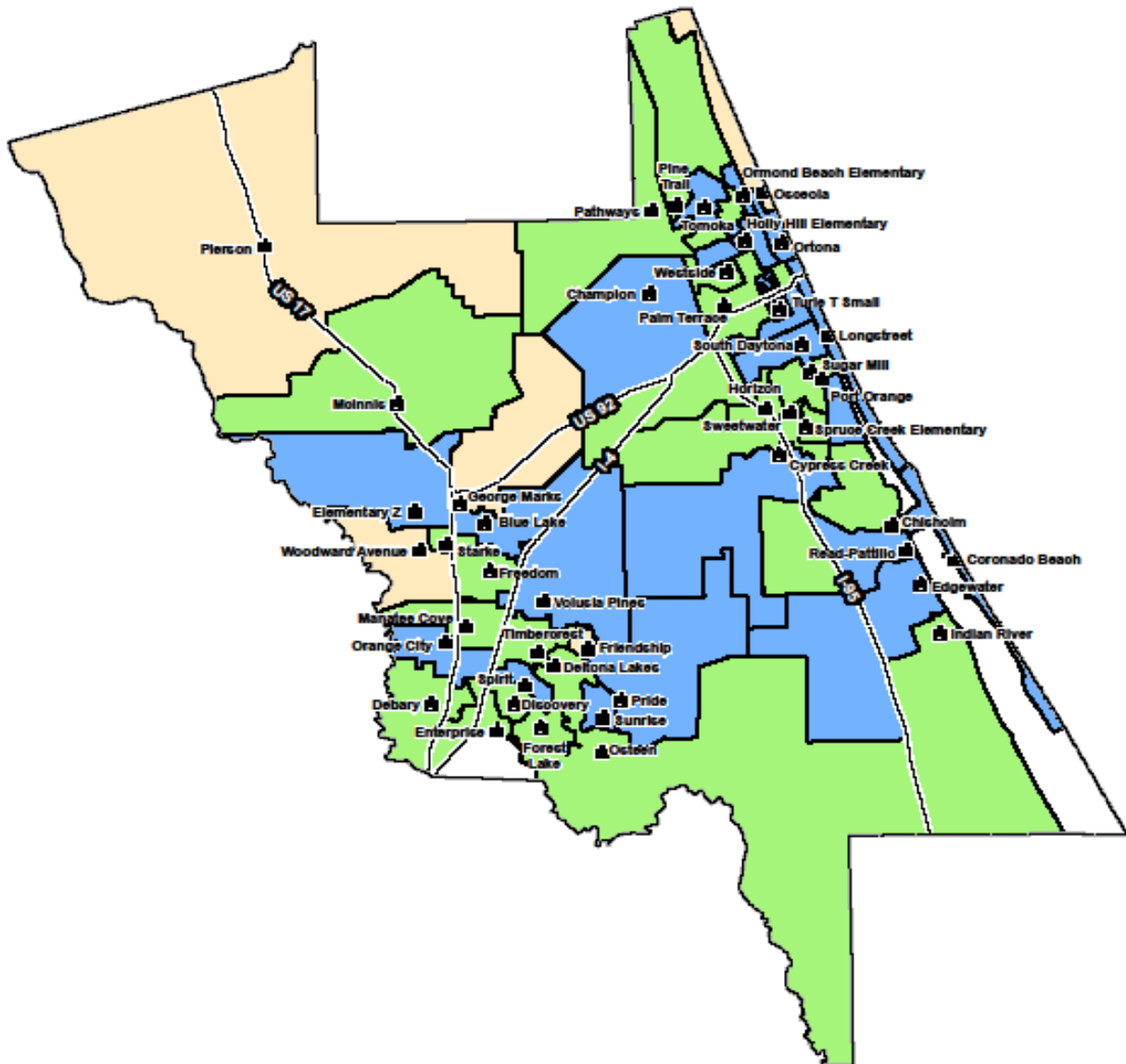
**Capital Projects List - Project Oversight**  
**Updated June 30, 2012**

<b>Completed Elementary School Sales Tax Projects</b>			
New Elementary "V"	South Halifax - <i>Cypress Creek Elementary School</i>	\$	11,000,000
New Elementary "W"	Southwest Volusia - <i>Spirit Elementary School</i>	\$	11,000,000
New Elementary "X"	Southwest Volusia - <i>Manatee Cove Elementary School</i>	\$	11,000,000
New Elementary "Y"	Southwest Volusia - <i>Pride Elementary School</i>	\$	11,000,000
New Elementary "Z"	West Volusia – <i>Citrus Grove Elementary School</i> – to open August 2011	\$	11,000,000
Replacement - Hurst Elementary	<i>Champion Elementary School (new site)</i>	\$	11,000,000
Blue Lake Elementary	Renovations: HVAC replacement, ceiling and lighting classrooms and up-grade interior finishes	\$	735,000
Coronado Elementary	Renovations: up-grade HVAC and electric service campus-wide, group toilets, exterior wall systems	\$	813,000
Edgewater Elementary	Site Work: Pave parent pick-up drive and provide additional parking	\$	250,000
Longstreet Elementary	Renovations: classroom windows and doors, group toilets (student), electrical up-grade campus-wide New Construction: music and art rooms	\$	1,650,000
Ormond Beach Elementary	Site Expansion	\$	200,000
Ortona Elementary	New construction: administration/guidance. Renovation: exterior walls campus-wide and up-grade electrical system campus-wide.	\$	925,000
Port Orange Elementary	HVAC up-grade campus wide	\$	200,000
Read-Pattillo Elementary	Renovations: exterior windows and doors. Expand site.	\$	460,000
South Daytona Elementary	Renovations: Up-grade HVAC campus wide. Site work: provide additional paved parking, remove Bldgs. 2 and 3. New construction: 12 classrooms and expand food service.	\$	4,458,412
Sunrise Elementary	Connect to city sewer	\$	200,000
Tomoka Elementary	Renovations: restrooms in classroom pods, exterior wall systems. Site work: covered walkway	\$	315,000
Turie T. Small Elementary	New construction cafeteria. Remodeling: existing food service to music room, and Bldg. 08 to art room.	\$	1,500,000
Volusia Pines Elementary	New construction: eight classroom addition	\$	2,175,000
Elementary Campuses	New and replacement playground equipment 13 Covered play area (pavilions)	\$	3,960,000
<b>Completed Middle School Sales Tax Projects</b>			
New Middle School "DD"	Southwest Volusia - <i>River Springs Middle School</i>	\$	20,000,000
New Middle School "GG"	North Halifax - <i>David C. Hinson Middle School</i>	\$	20,000,000
Replacement - Campbell Middle	Master Plan (new facility on same campus)	\$	20,000,000
DeLand Middle	A/C gymnasium	\$	500,000
Galaxy Middle	Remodel 6th grade science room	\$	500,000
Holly Hill School	Master plan campus – changed from middle to K-8 – to Open August 2011	\$	20,000,000
New Smyrna Beach Middle	Site work: improve drainage between bldgs. Renovations: Air condition kitchen	\$	500,000
Southwestern Middle	Renovations: gym a/c, locker rooms and windows, convert shop in Bldg. 04 to technology lab, campus-wide electrical up-grade. Site work: provide parent drop-off and pick-up loop	\$	1,620,000

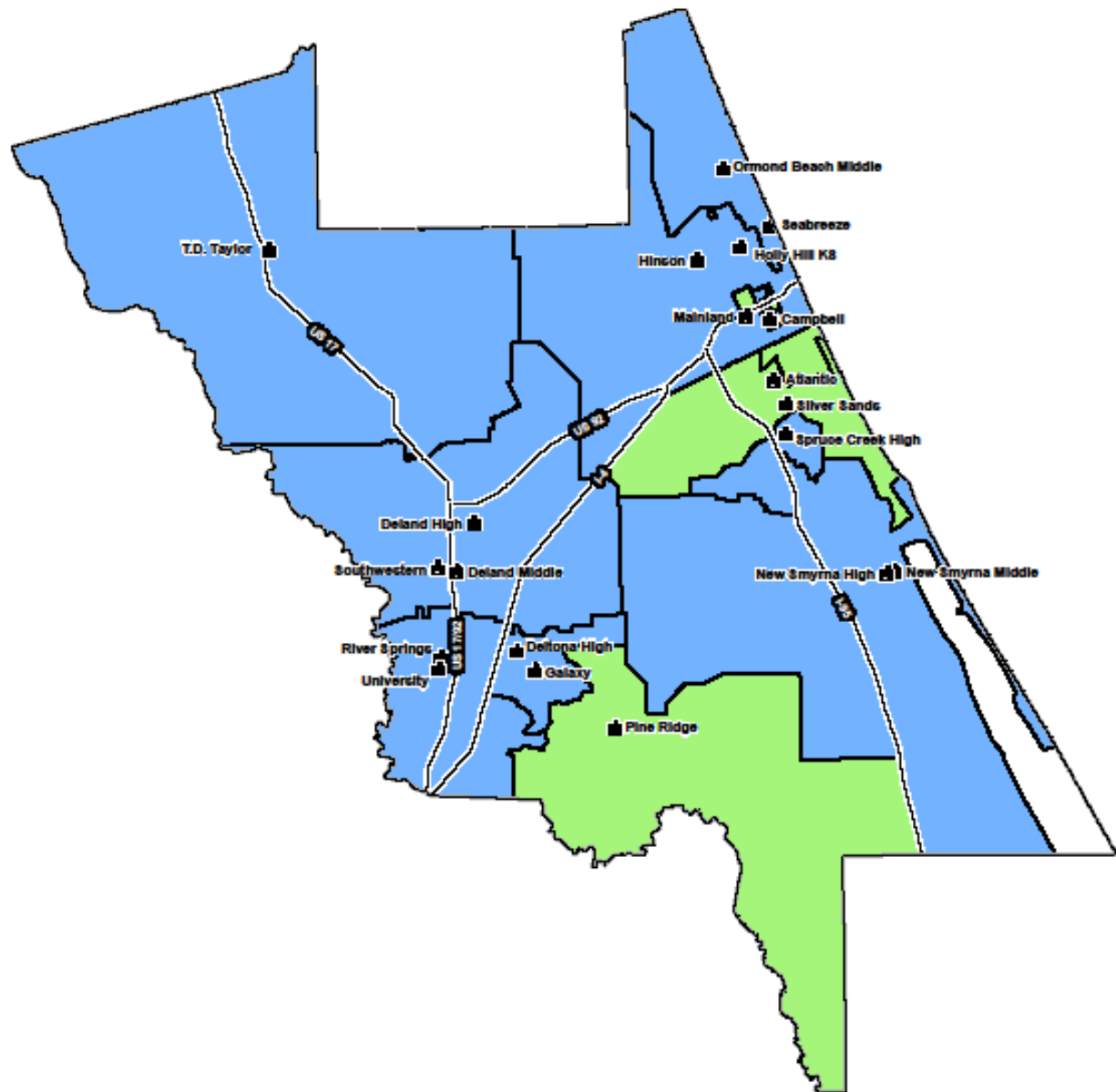
Completed High School Sales Tax Projects		
New High School "DDD"	West Volusia - <b>University High School</b>	\$ 40,000,000
Replacement - Mainland High	Master Plan	\$ 40,000,000
Replacement - New Smyrna Beach High	Replacement facility	\$ 40,000,000
Replacement - Taylor Middle/High	Master Plan	\$ 20,000,000
DeLand High	Phase 3 Master Plan	\$ 15,600,000
Deltona High	Renovations: provide A/C in gymnasium, kitchen, and food labs. Site work: resurface track (rubber)	\$ 1,975,000
Seabreeze High	Master Plan Phase III	\$ 7,000,000
Spruce Creek High	New construction: media center and 20 new classrooms. Remodeling: existing media to 4 classrooms, 2 labs	\$ 8,185,000
Completed Sales Tax Alternative Education Centers		
Alternative Education	Community Learning Centers - East and West	\$ 8,000,000
Sales Tax Projects Still In Progress		
Ormond Beach Middle	Master Plan – <b>Scheduled Completion November 2012</b>	\$ 10,000,000

Projects Cancelled/Delayed/Removed from Sales Tax Project List as of June 30, 2012		
SCHOOL	PROJECT DESCRIPTION	AMOUNT
Atlantic High	New construction, 8 classrooms, 3 science, 2 voc. Labs - <b>Project cancelled</b>	\$ 3,525,000
Bonner Elementary	Site work: provide additional parking and develop kindergarten playground. Renovations: remove Bldg. 6 up-grade HVAC campus wide. New construction: 10 classrooms. - <b>Project cancelled - School Closed.</b>	\$ 2,690,000
Chisholm Elementary	Renovations: HVAC up-grade campus wide. New construction: media center. Remodeling: existing media to 3 resource rooms. In design. <b>Delayed indefinitely pending additional funding.</b>	\$ 1,700,000
Enterprise Elementary	New construction of administration, P.E. and Material storage, the upgrade in lighting in the media center and other renovations – <b>Delayed indefinitely pending additional funding.</b>	\$ 2,605,000
George Marks Elementary	Replacement school. <b>Delayed indefinitely pending additional funding.</b>	\$ 1,660,000
Osceola Elementary	Site expansion, improve bus loop and provide additional parking. Renovations: upgrade electrical service campus-wide. <b>Delayed indefinitely pending additional funding.</b>	\$ 470,000
Pierson Elementary	Site work changed to school replacement. <b>Delayed indefinitely pending additional funding</b>	\$ 1,943,000
Westside Elementary	New construction: 2 classrooms and 2 resource. <b>Delayed indefinitely pending additional funding.</b>	\$ 650,000
New K-8 "FF"	Edgewater in Southeast Volusia. <b>Cancelled due to enrollment.</b>	\$ 20,000,000

**Volusia County Elementary Schools  
Sales Tax and Other Major Capital Projects  
2002-2012**



**Volusia County Middle & High Schools  
Sales Tax and Other Major Capital Projects  
2002-2012**



Sales Tax  
 Other Funds - Major HVAC System Improvements

*Note: Pine Ridge High School & Atlantic High School opened in 1994*

**SALES TAX PROJECTS STATUS REPORT AS OF JUNE 30, 2012**  
**ASSUMPTIONS AND EXPLANATIONS**

**ORIGINAL REPORT:** The initial report dated January 29, 2001 utilized for Board approval (March 20, 2001) of this report's sales tax projects.

**PROJECT:** A unique location where construction and or renovations take place.

**NAME:** The actual location of the project's construction and or renovation. In some cases the project location is not currently known, however, when finalized the project name will be assigned. No names have changed since the ORIGINAL REPORT.

**DESCRIPTION:** A brief explanation of the construction or renovation to be performed on a project. Descriptions may change from report to report to best reflect changes to a project's scope. No descriptions have changed since the ORIGINAL REPORT.

**MOST RECENT ESTIMATE:** The best current estimate of a project's cost.

**ORIGINAL PROJECT ESTIMATE:** The initial cost estimate assigned to a project reflected on the ORIGINAL REPORT. Includes hard cost, fees and furniture, fixtures and equipment. Excludes site acquisition, permitting, off site cost and enhanced hurricane protection area. The ORIGINAL REPORT showed total construction cost of \$392,964,412.

**CHANGES IN SCOPE:** Increases or decreases (from ORIGINAL PROJECT ESTIMATE) in the cost of a project due to changes in the amount of work to be done and the funding of sales tax projects with non-sales tax funds. Items may also include those excluded in the ORIGINAL PROJECT ESTIMATE. Scope items may be funded from sales tax or non-sales tax funds.

**CONTINGENCY:** This column reflects costs added to or subtracted from a project resulting from unforeseen causes and inflation amounts greater than the annual estimated 4% provision in the ORIGINAL REPORT assumptions. A provision of \$33,035,588 was assigned to all projects in the ORIGINAL REPORT.

**ORIGINAL INFLATION ESTIMATE:** Inflation results from timing differences between the initial estimate made as of January 29, 2001 (ORIGINAL REPORT) and the project start date. A rate of 4% per year was assumed base on the original schedule.

**TOTAL:** The sum of ORIGINAL PROJECT ESTIMATE, CHANGES IN SCOPE, CONTINGENCY and INFLATION. This sum represents the total cost of a project.

**(NON-SALES TAX) OTHER FUNDS:** Funds (future or current) used for a project's construction and or renovation derived from sources other than sales tax. The ORIGINAL REPORT assumed that \$54,000,000 in non-sales funds would be found for all projects.

**TOTAL SALES TAX FUNDS:** The total funding from Sales Tax Revenue Bonds and Sales Tax Revenue utilized in a project. The ORIGINAL REPORT estimated that a total of \$461,000,000 in these funds would be used for all projects.

**TOTAL COST TO DATE:** The total of all actual expenditures and encumbrances of a Sales Tax Project as of the report date.

**UNCOMMITTED:** A project's estimated cost not encumbered.

**COMMENTS / NOTES:** Explanation of material items related to a project.

SALES TAX PROJECTS STATUS REPORT AS OF JUNE 30, 2012

New Schools		<u>Most Recent</u>	<u>Orig. Project</u> <u>Changes</u>					<u>Non-Sales Tax</u>	<u>Sales Tax</u>	<u>Total Cost</u>		<u>Comments</u>
<u>Name</u>	<u>Description</u>	<u>Estimate</u>	<u>Estimate</u>	<u>In Scope</u>	<u>Contingency</u>	<u>Orig Iflation</u>	<u>Total</u>	<u>Funds</u>	<u>Funds</u>	<u>To Date</u>	<u>Uncommitted</u>	
Hinson Middle School	North Halifax	\$25,516,356	\$20,000,000	\$998,979	\$2,891,377	\$1,626,000	\$25,516,356	\$993,918	\$24,522,438	\$25,516,356	\$0	
Manatee Cove Elementary "X"	Southwest Volusia	\$15,614,394	\$11,000,000	\$355,267	\$2,841,227	\$1,417,900	\$15,614,394	\$0	\$15,614,394	\$15,614,394	\$0	
New Elementary "V"	South Halifax	\$20,064,369	\$11,000,000	\$20,057,777	(\$12,727,008)	\$1,733,600	\$20,064,369	\$20,051,054	\$13,315	\$20,064,369	\$0	
New Elementary "Y"	New School	\$22,764,545	\$11,000,000	\$22,131,821	(\$12,655,276)	\$2,288,000	\$22,764,545	\$21,286,365	\$1,478,180	\$22,764,545	\$0	
New Elementary "Z"	New School	\$19,659,888	\$11,000,000	\$15,076,496	(\$9,581,308)	\$3,164,700	\$19,659,888	\$13,611,558	\$6,048,330	\$19,659,888	\$0	
New High School "DDD"	New School West Volusia	\$117,240,469	\$40,000,000	\$114,833,768	(\$45,857,299)	\$8,264,000	\$117,240,469	\$112,234,155	\$5,006,314	\$117,240,469	\$0	
New Middle School "DD"	Southwest Volusia	\$42,968,777	\$20,000,000	\$42,962,837	(\$24,200,060)	\$4,206,000	\$42,968,777	\$42,962,837	\$5,940	\$42,968,777	\$0	
New Middle School "FF"	Southeast Volusia	\$708,933	\$20,000,000	\$684,890	(\$19,975,957)	\$0	\$708,933	\$668,361	\$40,572	\$708,933	\$0	
Spirit Elementary School "W"	Southwest Volusia	\$13,145,808	\$11,000,000	\$57,864	\$1,232,144	\$855,800	\$13,145,808	\$75	\$13,145,733	\$13,145,808	\$0	
Totals -    New Schools			\$155,000,000	\$217,159,699	(\$118,032,160)	\$23,556,000	\$277,683,539	\$211,808,323	\$65,875,216	\$277,683,539	\$0	

Existing Elementary Schools		<u>Most Recent</u>	<u>Orig. Project</u> <u>Changes</u>					<u>Non-Sales Tax</u>	<u>Sales Tax</u>	<u>Total Cost</u>		<u>Comments</u>
<u>Name</u>	<u>Description</u>	<u>Estimate</u>	<u>Estimate</u>	<u>In Scope</u>	<u>Contingency</u>	<u>Orig Iflation</u>	<u>Total</u>	<u>Funds</u>	<u>Funds</u>	<u>To Date</u>	<u>Uncommitted</u>	
Blue Lake Elementary School	Renovations: HVAC replacement, ceiling and lighting classrooms and up-grade interior finishes.	\$9,863,291	\$735,000	\$46,373	\$8,970,712	\$111,206	\$9,863,291	\$46,373	\$9,816,918	\$9,863,291	\$0	
Bonner Elementary School	Site work: provide additional parking and develop kindergarten playground. Renovations: remove Bldg. 6 up-grade HVAC campus wide. New construction: 10 classrooms.	\$23,790	\$2,690,000	\$0	(\$2,901,854)	\$235,644	\$23,790	\$0	\$23,790	\$23,790	\$0	
Chisholm Elementary School	Renovations: HVAC up-grade campus wide. New construction: media center. Remodeling: existing media to 3 resource rooms.	\$513,138	\$1,700,000	\$0	(\$1,302,802)	\$115,940	\$513,138	\$0	\$513,138	\$513,138	\$0	
Coronado Beach Elementary School	Renovations: up-grade HVAC and electric service campus-wide, group toilets, exterior wall systems.	\$2,664,142	\$813,000	\$1,095,028	\$717,253	\$38,861	\$2,664,142	\$1,095,028	\$1,569,114	\$2,664,142	\$0	
Edgewater Public Elementary School	Site work: pave parent pick-up drive and provide additional parking	\$507,754	\$250,000	\$0	\$219,054	\$38,700	\$507,754	\$0	\$507,754	\$507,754	\$0	
Enterprise Elementary School	Site work: provide parent pick-up loop, remove Bldg. 08 Develop courtyard and provide ext. lighting. New construction: administration, P.E. and material storage Renovation: up-grade lighting in media center	\$1,034,207	\$2,605,000	\$278,546	(\$2,455,001)	\$605,662	\$1,034,207	\$278,546	\$755,661	\$1,034,207	\$0	
George Marks Elementary School	Renovations: up-grade classroom finishes and cabinets, HVAC replacement, campus wide electrical up-grade	\$52,531	\$1,660,000	\$0	(\$1,862,113)	\$254,644	\$52,531	\$0	\$52,531	\$52,531	\$0	
Ormond Beach Elementary School	Site expansion	\$262,682	\$200,000	\$77,019	(\$26,017)	\$11,680	\$262,682	\$77,019	\$185,663	\$262,682	\$0	
Ortona Elementary School	New construction: administration/guidance. Renovation: exterior walls campus-wide and up-grade electrical system campus-wide	\$2,536,493	\$925,000	\$0	\$1,555,068	\$56,425	\$2,536,493	\$0	\$2,536,493	\$2,536,493	\$0	
Osceola Elementary School	Site expansion, improve bus loop and provide additional parking. Renovations: up-grade electrical service campus wide.	\$0	\$470,000	\$0	(\$470,000)	\$0	\$0	\$0	\$0	\$0	\$0	
Pierson Elementary School	Site work: remove fuel island, develop playground, provide parent pick-up loop. Renovations: campus wide electrical up-grade. New construction: remove Bldgs. 14 & 16 and construct new art room, storage, guidance and two resource rooms.	\$1,050,766	\$1,943,000	\$404,781	(\$1,297,015)	\$0	\$1,050,766	\$404,781	\$645,985	\$1,050,766	\$0	
Port Orange Elementary School	HVAC up-grade campus-wide	\$1,361,632	\$200,000	\$0	\$1,135,152	\$26,480	\$1,361,632	\$0	\$1,361,632	\$1,361,632	\$0	
R.J. Longstreet Elementary School	Renovations: classroom windows and doors, group toilets (student), electrical up-grade campus wide New construction: music and art rooms	\$6,655,282	\$1,650,000	\$1,713,421	\$2,926,551	\$365,310	\$6,655,282	\$1,713,421	\$4,941,861	\$6,655,282	\$0	
Read Pattillo Elementary School	Renovations: exterior windows and doors Expand site	\$1,539,661	\$460,000	\$736,005	\$225,666	\$117,990	\$1,539,661	\$611,992	\$927,669	\$1,539,661	\$0	
South Daytona Elementary School	Renovations: Up-grade HVAC campus wide. Site work: provide additional paved parking, remove Bldgs 2 and 3. New construction: 12 classrooms and expand food service.	\$17,422,118	\$4,458,412	\$1,958,986	\$10,467,481	\$537,239	\$17,422,118	\$1,958,986	\$15,463,132	\$17,422,118	\$0	
Sunrise Elementary School	Connect to city sewer	(\$91,067)	\$200,000	\$0	(\$291,067)	\$0	(\$91,067)	\$0	(\$91,067)	(\$91,067)	\$0	
Tomoka Elementary School	Renovations: restrooms in classroom pods, exterior wall systems, Site work: covered walkway to parent pick-up.	\$836,842	\$315,000	\$0	\$487,854	\$33,988	\$836,842	\$0	\$836,842	\$836,842	\$0	
Turie T. Small Elementary School	New construction cafeteria. Remodel: existing food service to music room, and Bldg. 08 to art room	\$1,878,540	\$1,500,000	\$152,652	\$168,888	\$57,000	\$1,878,540	\$152,652	\$1,725,888	\$1,878,540	\$0	



SALES TAX PROJECTS STATUS REPORT AS OF JUNE 30, 2012

Existing Elementary Schools		<u>Most Recent</u>	<u>Orig. Project</u> <u>Changes</u> <u>Orig Iflation</u>					<u>Non-Sales Tax</u>	<u>Sales Tax</u>	<u>Total Cost</u>		<u>Comments</u>
<u>Name</u>	<u>Description</u>	<u>Estimate</u>	<u>Estimate</u>	<u>In Scope</u>	<u>Contingency</u>	<u>Estimate</u>	<u>Total</u>	<u>Funds</u>	<u>Funds</u>	<u>To Date</u>	<u>Uncommitted</u>	
Volusia Pines Elementary School	New construction: eight classroom addition	\$1,325,603	\$2,175,000	\$0	(\$1,007,955)	\$158,558	\$1,325,603	\$0	\$1,325,603	\$1,325,603	\$0	
Walter A. Hurst Elementary School	Replacement facility	\$20,445,234	\$11,000,000	\$20,429,652	(\$13,837,818)	\$2,853,400	\$20,445,234	\$20,414,161	\$31,073	\$20,445,234	\$0	
Westside Elementary School	New construction: 2 classroom and 2 resource	\$0	\$650,000	\$0	(\$650,000)	\$0	\$0	\$0	\$0	\$0	\$0	
Totals - Existing Elementary Schools			\$36,599,412	\$26,892,463	\$772,037	\$5,618,727	\$69,882,639	\$26,752,959	\$43,129,680	\$69,882,639	\$0	

Existing Middle Schools		<u>Most Recent</u>	<u>Orig. Project</u> <u>Changes</u> <u>Orig Iflation</u>					<u>Non-Sales Tax</u>	<u>Sales Tax</u>	<u>Total Cost</u>		<u>Comments</u>
<u>Name</u>	<u>Description</u>	<u>Estimate</u>	<u>Estimate</u>	<u>In Scope</u>	<u>Contingency</u>	<u>Estimate</u>	<u>Total</u>	<u>Funds</u>	<u>Funds</u>	<u>To Date</u>	<u>Uncommitted</u>	
Campbell Middle School	Replacement facility	\$26,377,373	\$20,000,000	\$26,363,971	(\$20,130,598)	\$144,000	\$26,377,373	\$26,363,971	\$13,402	\$26,377,373	\$0	
Deland Middle School	A/C gymnasium	\$780,106	\$500,000	\$0	\$230,406	\$49,700	\$780,106	\$0	\$780,106	\$780,106	\$0	
Galaxy Middle School	Remodel 6th grade science rooms	\$536,012	\$500,000	\$0	(\$77,088)	\$113,100	\$536,012	\$0	\$536,012	\$536,012	\$0	
Holly Hill K-8	K-8 Replacement (replaces original project Holly Hill Middle School)	\$12,679,999	\$19,463,836	\$12,679,999	(\$26,050,398)	\$6,586,562	\$12,679,999	\$12,679,999	\$0	\$12,679,999	\$0	
Holly Hill Middle School	Master plan campus	\$126,164	\$536,164	\$14,370	(\$424,370)	\$0	\$126,164	\$14,370	\$111,794	\$126,164	\$0	
New Smyrna Middle School	Site work: improve drainage between bldgs. Renovations: Air condition kitchen	\$806,130	\$500,000	\$146,144	\$113,736	\$46,250	\$806,130	\$146,144	\$659,986	\$806,130	\$0	
Ormond Beach Middle School	Master Plan	\$47,315,269	\$10,000,000	\$47,208,033	(\$12,176,764)	\$2,284,000	\$47,315,269	\$46,702,689	\$107,236	\$46,809,925	\$505,344	
Southwestern Middle School	Renovations: gym a/c, locker rooms and windows, convert shop in Bldg. 04 to technology lab, campus wide electrical up-grade. Site work: provide parent drop-off and pick-up loop.	\$7,555,630	\$1,620,000	\$0	\$5,861,758	\$73,872	\$7,555,630	\$0	\$7,555,630	\$7,555,630	\$0	
Totals - Existing Middle Schools			\$53,120,000	\$86,412,517	(\$52,653,318)	\$9,297,484	\$96,176,683	\$85,907,173	\$9,764,166	\$95,671,339	\$505,344	

<u>Existing High Schools</u>		<u>Most Recent</u>	<u>Orig. Project</u> <u>Changes</u> <u>Orig Iflation</u>					<u>Non-Sales Tax</u>	<u>Sales Tax</u>	<u>Total Cost</u>		<u>Comments</u>
<u>Name</u>	<u>Description</u>	<u>Estimate</u>	<u>Estimate</u>	<u>In Scope</u>	<u>Contingency</u>	<u>Estimate</u>	<u>Total</u>	<u>Funds</u>	<u>Funds</u>	<u>To Date</u>	<u>Uncommitted</u>	
Atlantic High School	New construction, 8 clrms, 3 science, 2 voc. Labs	\$0	\$3,525,000	\$0	(\$3,525,000)	\$0	\$0	\$0	\$0	\$0	\$0	
Deland High School	Phase 3 Master Plan	\$42,214,477	\$15,600,000	\$5,942,169	\$20,110,708	\$561,600	\$42,214,477	\$5,942,169	\$36,272,308	\$42,214,477	\$0	
Deltona High School	Renovations: provide A/C in gymnasium, kitchen, and food labs. Site work: resurface track (rubber)	\$15,831,874	\$1,975,000	\$8,979,473	\$4,722,561	\$154,840	\$15,831,874	\$8,979,473	\$6,852,401	\$15,831,874	\$0	
Mainland High School		Master Plan	\$59,646,501	\$40,000,000	\$3,655,132	\$13,999,369	\$1,992,000	\$59,646,501	\$2,681,389	\$56,965,112	\$59,646,501	\$0
New Smyrna Beach High School	Replacement facility	\$49,617,647	\$40,000,000	\$3,072,340	\$2,529,307	\$4,016,000	\$49,617,647	\$58,728	\$49,558,919	\$49,617,647	\$0	
Seabreeze High School	Master Plan Phase III	\$8,545,449	\$7,000,000	\$1,243,024	(\$385,675)	\$688,100	\$8,545,449	\$1,243,024	\$7,302,425	\$8,545,449	\$0	
Spruce Creek High School	New construction: media center and 20 new classrooms Remodeling: existing media to 4 classrooms, 2 labs.	\$13,192,210	\$8,185,000	\$0	\$4,319,670	\$687,540	\$13,192,210	\$0	\$13,192,210	\$13,192,210	\$0	
T. Dewitt Taylor Middle-High School	Master Plan	\$45,161,406	\$20,000,000	\$434,374	\$23,385,032	\$1,342,000	\$45,161,406	\$92,126	\$45,069,280	\$45,161,406	\$0	
Totals - Existing High Schools			\$136,285,000	\$23,326,512	\$65,155,972	\$9,442,080	\$234,209,564	\$18,996,909	\$215,212,655	\$234,209,564	\$0	

Alternative Education		<u>Most Recent</u>	<u>Orig. Project</u> <u>Changes</u> <u>Orig Iflation</u>					<u>Non-Sales Tax</u>	<u>Sales Tax</u>	<u>Total Cost</u>		<u>Comments</u>
<u>Name</u>	<u>Description</u>	<u>Estimate</u>	<u>Estimate</u>	<u>In Scope</u>	<u>Contingency</u>	<u>Estimate</u>	<u>Total</u>	<u>Funds</u>	<u>Funds</u>	<u>To Date</u>	<u>Uncommitted</u>	
Community Learning Center East	New Facility	\$4,104,722	\$3,000,000	\$2,041,084	(\$1,522,562)	\$586,200	\$4,104,722	\$2,041,084	\$2,063,638	\$4,104,722	\$0	
Community Learning Center West	New Facility	\$3,965,379	\$3,000,000	\$1,614,242	(\$1,081,763)	\$432,900	\$3,965,379	\$0	\$3,965,379	\$3,965,379	\$0	
Euclid Avenue	Remodeling and renovations	\$0	\$2,000,000	\$0	(\$2,000,000)	\$0	\$0	\$0	\$0	\$0	\$0	
Totals - Alternative Education			\$8,000,000	\$3,655,326	(\$4,604,325)	\$1,019,100	\$8,070,101	\$2,041,084	\$6,029,017	\$8,070,101	\$0	

SALES TAX PROJECTS STATUS REPORT AS OF JUNE 30, 2012

District Wide		<u>Most Recent</u>	<u>Orig. Project</u>	<u>Changes</u>	<u>Orig Iflation</u>		<u>Non-Sales Tax</u>	<u>Sales Tax</u>	<u>Total Cost</u>			<u>Comments</u>
<u>Name</u>	<u>Description</u>	<u>Estimate</u>	<u>Estimate</u>	<u>In Scope</u>	<u>Contingency</u>	<u>Estimate</u>	<u>Total</u>	<u>Funds</u>	<u>Funds</u>	<u>To Date</u>	<u>Uncommitted</u>	
Various Schools	New and replacement playground equipment Covered play area (pavilions)	\$3,233,062	\$3,960,000	\$55,419	(\$782,357)	\$0	\$3,233,062	\$55,419	\$3,177,643	\$3,233,062	\$0	
Totals - District Wide			\$3,960,000	\$55,419	(\$782,357)	\$0	\$3,233,062	\$55,419	\$3,177,643	\$3,233,062	\$0	
Other Costs		<u>Most Recent</u>	<u>Orig. Project</u>	<u>Changes</u>	<u>Orig Iflation</u>		<u>Non-Sales Tax</u>	<u>Sales Tax</u>	<u>Total Cost</u>			<u>Comments</u>
<u>Name</u>	<u>Description</u>	<u>Estimate</u>	<u>Estimate</u>	<u>In Scope</u>	<u>Contingency</u>	<u>Estimate</u>	<u>Total</u>	<u>Funds</u>	<u>Funds</u>	<u>To Date</u>	<u>Uncommitted</u>	
Capital Management Cost	Capital Cost Of Facilities Administration	\$22,260,492	\$0	\$22,260,492	\$0	\$0	\$22,260,492	\$11,621,697	\$10,638,795	\$22,260,492	\$0	
Totals - Other Costs			\$0	\$22,260,492	\$0	\$0	\$22,260,492	\$11,621,697	\$10,638,795	\$22,260,492	\$0	
Totals All Facilities			\$392,964,412	\$379,762,428	(\$110,144,151)	\$48,933,391	\$711,516,080	\$357,183,564	\$353,827,172	\$711,010,736	\$505,344	

(1)

(2)

Estimates From Original Report	
Total Construction Cost	\$392,964,412
Contingency	\$33,035,588
Subtotal	\$426,000,000
Construction Inflation And Interest On Debt	\$89,000,000
Total Available Resources - (Non Sales Tax Funds)	(\$54,000,000)
Sales Tax Funds Required	\$461,000,000

(1) See "Changes In Scope" Report (Total)

(2) See "Changes In Scope" Report (Non-Sales Tax Funds)

**SALES TAX PROJECTS STATUS REPORT AS OF JUNE 30, 2012**  
**CHANGES IN SCOPE**  
**ASSUMPTIONS AND EXPLANATIONS**

Original Sales Tax estimates were based on construction costs paid with Sales Tax Funds. Costs not in estimates include land purchase costs, off-site development costs, capital management costs and costs related to increasing the original scope of a project.

**FUTURE NON-SALES TAX FUNDS**: A known future funding source (other than Sales Tax Funds) to be used as part of a Sales Tax Project. As these funds are encumbered they will be reclassified to NON-SALES TAX FUNDS (See below).

**NON-SALES TAX FUNDS**: Funds encumbered or expended from sources other than Sales Tax Funds.

**LAND PURCHASES WITH SALES TAX FUNDS**: One of the items excluded in the original Sales Tax estimate. These amounts have or will be encumbered and expended with Sales Tax Funds for land purchases on Sales Tax Projects. (Note: some projects have an original scope that includes land purchases.)

**PROJECT INCREASES/DECREASES**: Amounts here include off-site development costs and increased costs to accommodate changes in a school requirement (Example: “DDD” increased from 2,000 to 2,500 students). (Note: excluded from the current report due to estimated values.)

**CAPITAL MANAGEMENT COST**: (Project management and operations): One of the items excluded in the original Sales Tax estimate.

**TOTAL CHANGES IN SCOPE**: (FUTURE NON-SALES TAX FUNDS) + (NON-SALES TAX FUNDS) + (LAND PURCHASES WITH SALES TAX FUNDS) + (PROJECT INCREASES/DECREASES) + (CAPITAL MANAGEMENT COST).

SALES TAX PROJECTS STATUS REPORT AS OF JUNE 30, 2012

CHANGES IN SCOPE

New Schools

<u>Facility</u>	<u>Description</u>	<u>Future Non - Sales</u> <u>Tax Funds</u>	<u>Non-Sales</u> <u>Tax Funds</u>	<u>Land Purchased With</u> <u>Sales Tax Funds</u>	<u>Project</u> <u>Increases/Decreases</u>	<u>Capital Management</u> <u>From Sales Tax Funds</u>	<u>Total Changes In Scope</u>	<u>Comments</u>
Hinson Middle School	North Halifax	\$0	\$993,918	\$5,061	\$0	\$0	\$998,979	
Manatee Cove Elementary "X"	Southwest Volusia	\$0	\$0	\$355,267	\$0	\$0	\$355,267	
New Elementary "V"	South Halifax	\$0	\$20,051,054	\$6,723	\$0	\$0	\$20,057,777	
New Elementary "Y"	New School	\$0	\$21,286,365	\$845,456	\$0	\$0	\$22,131,821	
New Elementary "Z"	New School	\$0	\$13,611,558	\$1,464,938	\$0	\$0	\$15,076,496	
New High School "DDD"	New School West Volusia	\$0	\$112,234,155	\$2,599,613	\$0	\$0	\$114,833,768	
New Middle School "DD"	Southwest Volusia	\$0	\$42,962,837	\$0	\$0	\$0	\$42,962,837	
New Middle School "FF"	Southeast Volusia	\$0	\$668,361	\$16,529	\$0	\$0	\$684,890	
Spirit Elementary School "W"	Southwest Volusia	\$0	\$75	\$57,789	\$0	\$0	\$57,864	
Totals - New Schools		\$0	\$211,808,323	\$5,351,376	\$0	\$0	\$217,159,699	

Existing Elementary Schools

<u>Facility</u>	<u>Description</u>	<u>Future Non - Sales</u> <u>Tax Funds</u>	<u>Non-Sales</u> <u>Tax Funds</u>	<u>Land Purchased With</u> <u>Sales Tax Funds</u>	<u>Project</u> <u>Increases/Decreases</u>	<u>Capital Management</u> <u>From Sales Tax Funds</u>	<u>Total Changes In Scope</u>	<u>Comments</u>
Blue Lake Elementary School	Renovations: HVAC replacement, ceiling and lighting classrooms and up-grade interior finishes.	\$0	\$46,373	\$0	\$0	\$0	\$46,373	
Bonner Elementary School	Site work: provide additional parking and develop kindergarten playground. Renovations: remove Bldg. up-grade HVAC campus wide. New construction: 10 classrooms.	\$0	\$0	\$0	\$0	\$0	\$0	
Chisholm Elementary School	Renovations: HVAC up-grade campus wide. New construction: media center. Remodeling: existing media to 3 resource rooms.	\$0	\$0	\$0	\$0	\$0	\$0	
Coronado Beach Elementary School	Renovations: up-grade HVAC and electric service campus-wide, group toilets, exterior wall systems.	\$0	\$1,095,028	\$0	\$0	\$0	\$1,095,028	
Edgewater Public Elementary School	Site work: pave parent pick-up drive and provide additional parking	\$0	\$0	\$0	\$0	\$0	\$0	
Enterprise Elementary School	Site work: provide parent pick-up loop, remove Bldg. C Develop courtyard and provide ext. lighting. New construction: administration, P.E. and material storage Renovation: up-grade lighting in media center	\$0	\$278,546	\$0	\$0	\$0	\$278,546	
George Marks Elementary School	Renovations: up-grade classroom finishes and cabinets, HVAC replacement, campus wide electrical up-grade	\$0	\$0	\$0	\$0	\$0	\$0	
Ormond Beach Elementary School	Site expansion	\$0	\$77,019	\$0	\$0	\$0	\$77,019	
Ortona Elementary School	New construction: administration/guidance. Renovation: exterior walls campus-wide and up-grade electrical system campus-wide	\$0	\$0	\$0	\$0	\$0	\$0	
Osceola Elementary School	Site expansion, improve bus loop and provide additional parking. Renovations: up-grade electrical service campus wide.	\$0	\$0	\$0	\$0	\$0	\$0	
Pierson Elementary School	Site work: remove fuel island, develop playground, provide parent pick-up loop. Renovations: campus wide electrical up-grade. New construction: remove Bldgs. 14 & 16 and construct new art room, storage, guidance and two resource rooms.	\$0	\$404,781	\$0	\$0	\$0	\$404,781	
Port Orange Elementary School	HVAC up-grade campus-wide	\$0	\$0	\$0	\$0	\$0	\$0	
R.J. Longstreet Elementary School	Renovations: classroom windows and doors, group toilets (student), electrical up-grade campus wide New construction: music and art rooms	\$0	\$1,713,421	\$0	\$0	\$0	\$1,713,421	
Read Pattillo Elementary School	Renovations: exterior windows and doors Expand sit	\$0	\$611,992	\$124,013	\$0	\$0	\$736,005	

SALES TAX PROJECTS STATUS REPORT AS OF JUNE 30, 2012

CHANGES IN SCOPE

Existing Elementary Schools

<u>Facility</u>	<u>Description</u>	<u>Future Non - Sales</u> <u>Tax Funds</u>	<u>Non-Sales</u> <u>Tax Funds</u>	<u>Land Purchased With</u> <u>Sales Tax Funds</u>	<u>Project</u> <u>Increases/Decreases</u>	<u>Capital Management</u> <u>From Sales Tax Funds</u>	<u>Total Changes In Scope</u>	<u>Comments</u>
South Daytona Elementary School	Renovations: Up-grade HVAC campus wide. Site work provide additional paved parking, remove Bldgs 2 and 3. New construction: 12 classrooms and expand food service.	\$0	\$1,958,986	\$0	\$0	\$0	\$1,958,986	
Sunrise Elementary School	Connect to city sewer	\$0	\$0	\$0	\$0	\$0	\$0	
Tomoka Elementary School	Renovations: restrooms in classroom pods, exterior wall systems, Site work: covered walkway to parent pick-up.	\$0	\$0	\$0	\$0	\$0	\$0	
Turie T. Small Elementary School	New construction cafeteria. Remodel: existing food service to music room, and Bldg. 08 to art room	\$0	\$152,652	\$0	\$0	\$0	\$152,652	
Volusia Pines Elementary School	New construction: eight classroom addition	\$0	\$0	\$0	\$0	\$0	\$0	
Walter A. Hurst Elementary School	Replacement facility	\$0	\$20,414,161	\$15,491	\$0	\$0	\$20,429,652	
Westside Elementary School	New construction: 2 classroom and 2 resource	\$0	\$0	\$0	\$0	\$0	\$0	
Totals - Existing Elementary Schools		\$0	\$26,752,959	\$139,504	\$0	\$0	\$26,892,463	

Existing Middle Schools

<u>Facility</u>	<u>Description</u>	<u>Future Non - Sales</u> <u>Tax Funds</u>	<u>Non-Sales</u> <u>Tax Funds</u>	<u>Land Purchased With</u> <u>Sales Tax Funds</u>	<u>Project</u> <u>Increases/Decreases</u>	<u>Capital Management</u> <u>From Sales Tax Funds</u>	<u>Total Changes In Scope</u>	<u>Comments</u>
Campbell Middle School	Replacement facility	\$0	\$26,363,971	\$0	\$0	\$0	\$26,363,971	
Deland Middle School	A/C gymnasium	\$0	\$0	\$0	\$0	\$0	\$0	
Galaxy Middle School	Remodel 6th grade science rooms	\$0	\$0	\$0	\$0	\$0	\$0	
Holly Hill K-8	K-8 Replacement (replaces original project Holly Hill Middle School)	\$0	\$12,679,999	\$0	\$0	\$0	\$12,679,999	
Holly Hill Middle School	Master plan campus	\$0	\$14,370	\$0	\$0	\$0	\$14,370	
New Smyrna Middle School	Site work: improve drainage between bldgs. Renovations: Air condition kitchen	\$0	\$146,144	\$0	\$0	\$0	\$146,144	
Ormond Beach Middle School	Master Plan	\$505,344	\$46,702,689	\$0	\$0	\$0	\$47,208,033	
Southwestern Middle School	Renovations: gym a/c, locker rooms and windows, convert shop in Bldg. 04 to technology lab, campus wide electrical up-grade. Site work: provide parent drop off and pick-up loop.	\$0	\$0	\$0	\$0	\$0	\$0	
Totals - Existing Middle Schools		\$505,344	\$85,907,173	\$0	\$0	\$0	\$86,412,517	

Existing High Schools

<u>Facility</u>	<u>Description</u>	<u>Future Non - Sales</u> <u>Tax Funds</u>	<u>Non-Sales</u> <u>Tax Funds</u>	<u>Land Purchased With</u> <u>Sales Tax Funds</u>	<u>Project</u> <u>Increases/Decreases</u>	<u>Capital Management</u> <u>From Sales Tax Funds</u>	<u>Total Changes In Scope</u>	<u>Comments</u>
Atlantic High School	New construction, 8 clrms, 3 science, 2 voc. Labs	\$0	\$0	\$0	\$0	\$0	\$0	
Deland High School	Phase 3 Master Plan	\$0	\$5,942,169	\$0	\$0	\$0	\$5,942,169	
Deltona High School	Renovations: provide A/C in gymnasium, kitchen, and food labs. Site work: resurface track (rubber)	\$0	\$8,979,473	\$0	\$0	\$0	\$8,979,473	
Mainland High School	Master Plan	\$0	\$2,681,389	\$973,743	\$0	\$0	\$3,655,132	
New Smyrna Beach High School	Replacement facility	\$0	\$58,728	\$3,013,612	\$0	\$0	\$3,072,340	
Seabreeze High School	Master Plan Phase III	\$0	\$1,243,024	\$0	\$0	\$0	\$1,243,024	
Spruce Creek High School	New construction: media center and 20 new classrooms Remodeling: existing media to 4 classrooms, 2 labs.	\$0	\$0	\$0	\$0	\$0	\$0	
T. Dewitt Taylor Middle-High School	Master Plan	\$0	\$92,126	\$342,248	\$0	\$0	\$434,374	

# SALES TAX PROJECTS STATUS REPORT AS OF JUNE 30, 2012

## CHANGES IN SCOPE

### Existing High Schools

<u>Facility</u>	<u>Description</u>	<u>Future Non - Sales Tax Funds</u>	<u>Non-Sales Tax Funds</u>	<u>Land Purchased With Sales Tax Funds</u>	<u>Project Increases/Decreases</u>	<u>Capital Management From Sales Tax Funds</u>	<u>Total Changes In Scope</u>	<u>Comments</u>
Totals - Existing High Schools		\$0	\$18,996,909	\$4,329,603	\$0	\$0	\$23,326,512	

### Alternative Education

<u>Facility</u>	<u>Description</u>	<u>Future Non - Sales Tax Funds</u>	<u>Non-Sales Tax Funds</u>	<u>Land Purchased With Sales Tax Funds</u>	<u>Project Increases/Decreases</u>	<u>Capital Management From Sales Tax Funds</u>	<u>Total Changes In Scope</u>	<u>Comments</u>
Community Learning Center East	New Facility	\$0	\$2,041,084	\$0	\$0	\$0	\$2,041,084	
Community Learning Center West	New Facility	\$0	\$0	\$1,614,242	\$0	\$0	\$1,614,242	
Euclid Avenue	Remodeling and renovations	\$0	\$0	\$0	\$0	\$0	\$0	
Totals - Alternative Education		\$0	\$2,041,084	\$1,614,242	\$0	\$0	\$3,655,326	

### District Wide

<u>Facility</u>	<u>Description</u>	<u>Future Non - Sales Tax Funds</u>	<u>Non-Sales Tax Funds</u>	<u>Land Purchased With Sales Tax Funds</u>	<u>Project Increases/Decreases</u>	<u>Capital Management From Sales Tax Funds</u>	<u>Total Changes In Scope</u>	<u>Comments</u>
Various Schools	New and replacement playground equipment Covered play area (pavilions)	\$0	\$55,419	\$0	\$0	\$0	\$55,419	
Totals - District Wide		\$0	\$55,419	\$0	\$0	\$0	\$55,419	

### Other Costs

<u>Facility</u>	<u>Description</u>	<u>Future Non - Sales Tax Funds</u>	<u>Non-Sales Tax Funds</u>	<u>Land Purchased With Sales Tax Funds</u>	<u>Project Increases/Decreases</u>	<u>Capital Management From Sales Tax Funds</u>	<u>Total Changes In Scope</u>	<u>Comments</u>
Capital Management Cost	Capital Cost Of Facilities Administration	\$0	\$11,621,697	\$0	\$0	\$10,638,795	\$22,260,492	
Totals - Other Costs		\$0	\$11,621,697	\$0	\$0	\$10,638,795	\$22,260,492	

Total All Facilities	\$505,344	\$357,183,564	\$11,434,725	\$0	\$10,638,795	\$379,762,428
	(2)					(1)

(1) See "Sales Tax Projects Status" Report (Changes In Scope)

(2) See "Sales Tax Projects Status" Report (Non-Sales Tax Other Funds)